

Series II-PC Access Control

Integrated, validated and PC-based.
From Rees Scientific, the name you trust for all
your laboratory monitoring needs.



Entries at Reader # 1: Front Door

Doe, Susan Car NJL-555

1007 Whitehead Road Extension
Trenton NJ 08638

Full Access Operations

Home: 609-555-1234 Work: 609-530-1055

Emergency: James Doe
Trenton, NJ 08638

Photo shows who entered, and can be used for picture ID badging.

6/10/00 - 9:20 AM

Rees Monitoring System - Node 5: Card Access

File Alarm Program Window Help

REES SCIENTIFIC

Your Facility Name
Your Facility Address
City, State, Zip

Page 1
Printed: 6/15/00
Readings: 2/10/00-2/10/00

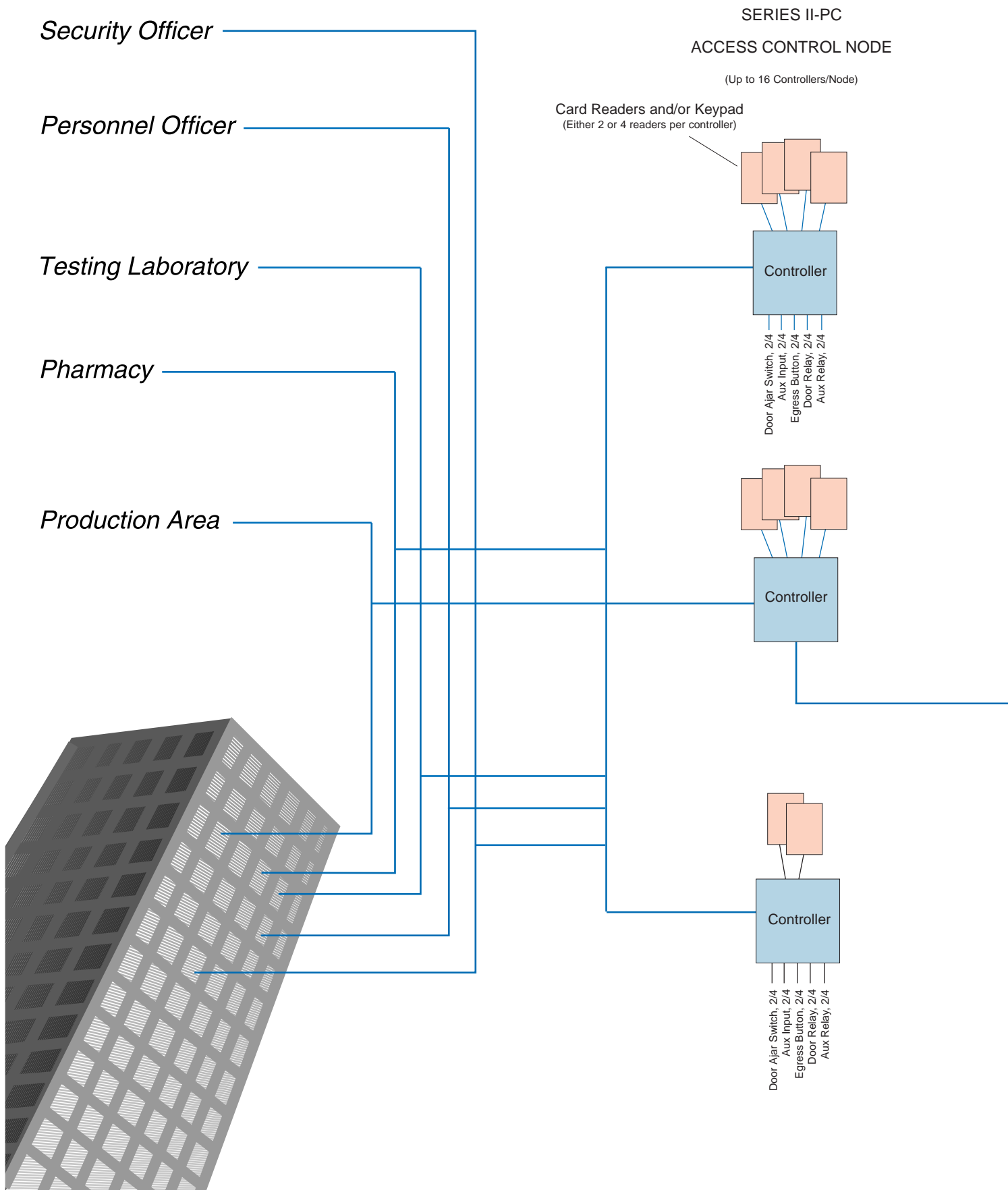
EVENT REPORT: All Events NODE: Card Access System

| Date | Time | Input | Nmbr | Report | Person's ID |
|---------|----------|-----------------------|------|----------------------|--------------------|
| 6/10/00 | 07:40 AM | Lobby Entrance Reader | 1 | Denied: Off Schedule | Childs, Patrick |
| 6/10/00 | 08:02 AM | Lobby Entrance Reader | 1 | Access Granted | Manzie, Len |
| 6/10/00 | 08:05 AM | Elevator 1 | 3 | Access Granted | Manzie, Len |
| 6/10/00 | 08:10 AM | Mouse Room B49 | 20 | Denied: Bad Pin | Greene, Dan |
| 6/10/00 | 08:10 AM | Lobby Entrance Reader | 1 | Access Granted | Thomas, Rees |
| 6/10/00 | 08:12 AM | Lobby Entrance Reader | 1 | Access Granted | Gray, Cindy |
| 6/10/00 | 08:12 AM | Production Reader | 8 | Denied: Wrong Door | Green, Dan |
| 6/10/00 | 08:13 AM | Lobby Entrance Reader | 1 | Access Granted | White, Janice |
| 6/10/00 | 08:25 AM | Vivarium Hall Door | 15 | Access Granted | Manzie, Len |
| 6/10/00 | 08:25 AM | | | Program Change | Thomas, Rees |
| 6/10/00 | 08:30 AM | | | Program Change | Thomas, Rees |
| 6/10/00 | 08:45 AM | | | Program Change | Thomas, Rees |
| 6/10/00 | 08:45 AM | Front Door Magstripe | 2 | In Alarm | Perimeter Security |
| 6/10/00 | 08:46 AM | Front Door Magstripe | 2 | Reset Alarm | Thomas, Rees |
| 6/10/00 | 09:20 AM | Lobby Entrance Reader | 1 | Access Granted | Doe, Susan |
| 6/10/00 | 09:25 AM | Elevator 1 | 3 | Access Granted | Doe, Susan |
| 6/10/00 | 09:30 AM | Lobby Entrance Reader | 1 | Access Granted | Brown, Steven |

READY ONLINE NUM

From Entry to Printout
...Automatically

Monitor Multiple Sites...



Series II-PC Access Control

The Series II-PC Access Control System offers a powerful, validated card access system with the ease and convenience of a Windows® based software application that you can run from your desktop computer. It's easy to use, and expandable to grow as your needs grow. You have the power of an access control system that can handle up to 300 access groups, a 32,000 card database, 16 alarm zones, 128 reader groups, and 32 elevator control groups...in one or multiple sites, and you can control and view what is happening from your desktop computer.

A flexible system that works with industry standard readers and hardware.

You can have up to 16 controllers per node, and they can be either two or four door reader controllers. There can be up to 32 nodes total on the system. Controller units are separate from readers and they can be made to set off either a local or remote alarm if anyone tries to tamper with them.

Integrated Perimeter Security. The Series II-PC eliminates the need for separate alarm control panels by integrating all door switches, window bugs, and motion sensors. These inputs can be activated, or deactivated, by a simple swipe of the card. Swipe your card upon entering and disarm all of the inputs, or only the inputs in your particular alarm zone. Swipe your card to exit and the LED lights will indicate that the alarm zone, or the entire facility, is armed.

Alarm Zones. In cases where you may need to restrict access because you are sharing a facility, or each department within a facility has its own security concerns, alarm zones allow you to restrict access to specific areas by combining multiple inputs/readers into a user defined zone. There may be several zones on a single floor, or several floors in a single zone.

Multi-User System. Multiple users can operate the system simultaneously from their own desktop computers. The system's network communications run over TCP/IP which means compatibility with virtually all installed networks including wide area networks (WANs), corporate intranets, and the Internet. You can even operate the system over the Internet from any computer in the world!

The Series II-PC offers programming protection with eight levels of passcode security, so while the Series II-PC is easy to use from your desktop computer, it is only accessible to those with the proper authority. It produces a complete audit trail of all significant system events, including details of all programming changes, who made the changes, and when they were made.

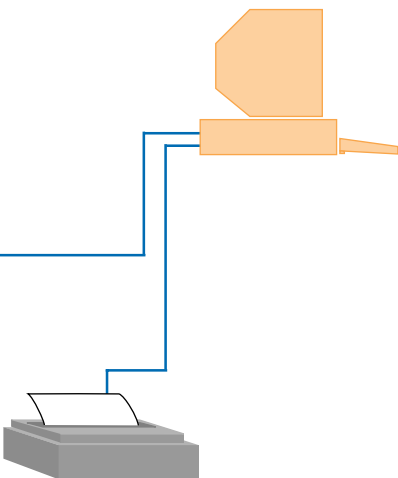
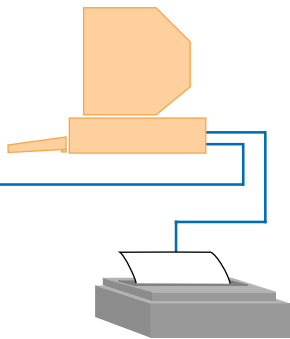
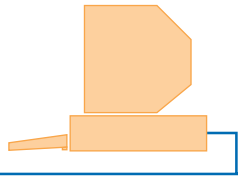
Floor plan graphic of your facility. A floor plan graphic of your facility shows readers and doors, each color coded to indicate its status. Click on any reader or door and a box with more detailed information appears. Double click on any input and the alarm control screen appears for fast, easy, alarm response.

Multi-level Maps. For a clearer look at any room or area of your facility, just click on the magnifying glass and get an enlarged, more detailed view of a specific area.

Create a photo database. Rees Scientific can provide either a capture board, so that you can plug in your own camcorder, or a full photo setup. If you need photo ID

NETWORK BACKBONE or MODEM LINK

NETWORK BACKBONE or MODEM LINK

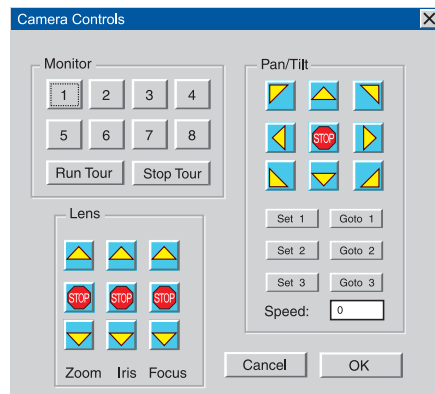


badges you can send your files to us to be converted into badges, or we can provide you with your own complete photo ID badging system.

'See Who Enters': Set the system to show photos, from your cardholder database, of anyone who enters at a reader, and compare the photo with the view from your CCTV camera. This is an easy way to make sure the access card belongs to its user, a needed feature at high security facilities.

'Find a cardholder': Need to find someone in a large, multi-site facility? Click the 'Find' button and select a cardholder name. The last card reader that the person used shows a detail box with the name of the reader, name of the person, status (such as access granted or denied) and date and time used.

CCTV Integration: Allows users with compatible CCTV switching equipment to control panning, switching and recording of CCTV cameras from their desktop. Link alarming inputs to CCTV switcher. View the alarm situation as it happens.



Elevator Control: Allows you to restrict access to certain floors. This feature is perfect for critical or high security areas. It is also a must for multi-tenant buildings where the elevator is shared.

Anti-Passback: Keeps track of everyone who has entered your facility, or any secured area within the facility. A card cannot be "passed back" to another person so he or she can gain entry. The system also keeps a record of which cards have been "passed back" in the event log. This feature works in two ways:

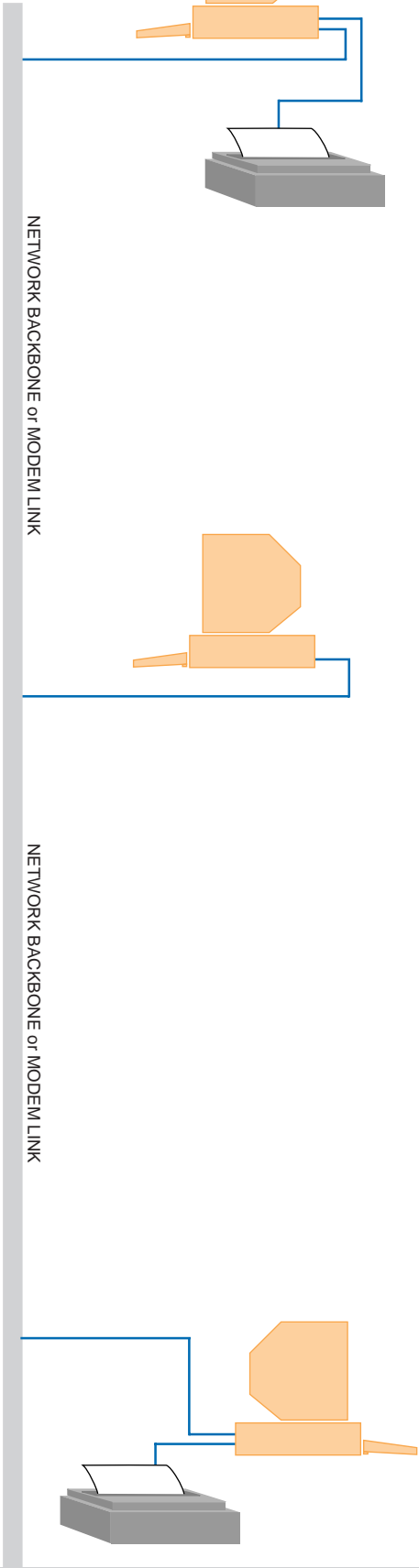
Anti-Pass back - Let In: The second person to scan the card will be let in, but an alarm will go off.

Anti-Pass back - Lock Out: The second person to scan a card will be denied entry and an alarm will go off.

Interlocking Doors: A critical feature for facilities with clean and contaminated areas. The interlocking feature links two or more doors together, preventing entrance (locking down) through the second door until the first door is secured. This system is often used when you have a pressurized clean room or research laboratory to prevent potential pathogens from getting into the general air system of the building, or conversely, keeping the general air supply from contaminating a delicate project.

Auto alarm activation/deactivation, auto lock/unlock, etc. Up to 64 schedules/time zones and 32 holiday exceptions control auto unlock, automatic security alarm activation/deactivation, and door access control.

Easy to program card or card reader information. To add a cardholder, just enter a name, cardholder number and access group and you're set. Nearly instantaneous response to PC data input and a 32,000 card database.



True Multi-User
 Networkable
 Validated System
 Easy to Program
 Photo ID Badging
 'See Who Enters'
 Alarm Zone Control

Series II-PC Access Control

Multiple daily and holiday schedules. Each node of 16 controllers controls up to 64 doors with up to 64 daily schedules and 32 holiday exceptions. You can

have up to 64 access groups per node, each with a choice of 8 different reader group/schedule associations. Each node can have up to 64 schedules for auto unlock and alarm shunt.

Analog Alarm Points: Just as access control helps to keep your facility secure, equipment monitoring helps keep your research projects and storage of your perishable products secure. Now you can do both with your access control system.

A wide variety of sensors can be used with your access control system so that you can monitor temperature, humidity, lighting, etc. The access control system monitors, but does not keep records of the analog input readings. Analog inputs can also be connected to an alarm status panel so that a glance at the panel will tell you if everything is secure and functioning properly before you leave, or as you enter for the day. If you require recording and printing of analog input readings, you may want to integrate

the Series II-PC Environmental Monitor with your access control system.

...from Multiple PCs

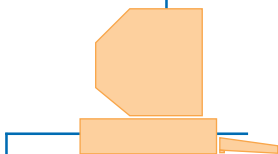
The access system also provides system-wide alarm control with the swipe of an access card at a designated reader.

A variety of reports. Reports based on time, date, or activity, even time and attendance, can be viewed on screen or printed out. They can even be printed out automatically!

NETWORK BACKBONE or MODEM LINK

NETWORK BACKBONE or MODEM LINK

| Date | Time | Input | Node | Condition |
|---------|----------|-------|-------------|----------------|
| 6/10/00 | 12:05 PM | 1 | Card Access | Access Granted |
| 6/10/00 | 12:16 PM | 1 | Card Access | Access Granted |
| 6/10/00 | 12:31 PM | 1 | Card Access | Access Granted |
| 6/10/00 | 12:40 PM | 1 | Card Access | Access Granted |



Rees Scientific Series II-PC Technical Specifications

Access Control - Overview

The System - There are up to 32 card access nodes on the system. Each node controls up to 16 controllers. Each controller can control either 2 or 4 doors.

Multi-Platform - Run the system on the PC that is sitting on your desk. Acts like any other Windows® application.

Multi-User - 1, 3, or 10 user systems available. All terminals fully capable, system communications over essentially all standard computer networks. Communicates using TCP/IP protocols. Runs with Windows® 3.1, 95, 98, and NT.

Floor Plan - Continuous system status display on a floor plan graphic of your facility shows door open/closed and alarm status at every point.

Running Log - Continuous display of every event on the system including card swipes, program changes, alarm control events, etc. 1500 events are buffered in each controller to allow PC to be left off-line.

Photo ID - Integrated Photo ID database. System can display photos of entries, and offers optional DataCard Photo ID badge printing.

Database - Database information is stored in every controller to provide instant response to card inputs. Program parameters are sent to the controllers immediately upon program change, providing near instant response to PC inputs.

Controllers - Controller units are separate from readers for additional security.

Modes - System continues to monitor and control access even when the user is programming it.

Card Formats and Reader Types - The system supports industry standard cards and card readers, and the card number format used is user-determined.

- Magnetic Stripe, with or without PIN numbers
- Wiegand
- Proximity
- Bar Code, with or without PIN
- Keypad
- Card access numbers can be up to 10 digits for security.
- The system will support up to 32,000 cardholders.

Schedules -

- Up to 300 Entry Access Groups per node. Each access group gets a choice of 8 different reader group/ schedule associations.
- Up to 32 Floor Access Groups.
- Up to 128 Reader Groups.
- Up to 64 schedules/time-zones per node.
- Up to 32 holidays per node.

Reports - The following reports may be viewed on the computer or printed out:

- Total event log between selected dates.
- Activity at a specific reader between selected dates.
- Activity of an individual card holder between selected dates.
- System audit trail between selected dates.
- Complete user program printout.
- User names and security codes (supervisory access only).
- Time and attendance.

Alarms -

Perimeter Security

- Each reader position can be reconfigured to provide 6 security or analog inputs.
- System wide alarm control by card reader or keypad.
- Automatic alarm activation by schedule with holiday exceptions.
- Alarm status/control panel shows status of the system at a glance.
- 16 alarm zones.

Telephoned alarms

- Dial-out capability built in when Series II-Access Control is integrated with the Series II-PC environmental system.
- Dial-out accessory for off-site notification available for stand alone Access II systems.

Security Features

Optional Built-in Battery Backup - There is also independent battery back-up of the user program, readings, and alarm data.

Keyboard Security - If programming is interrupted, keyboard automatically locks the system to prevent unauthorized entry.

Access Codes -

- Program access locked by user-programmable access code.
- 8 different access permission levels.
- Complete audit trail of all significant system events including program changes, alarm control actions, door entries, etc.
- The system is 21-CFR-11 compliant.

Continuous System Self-Testing - All data communications are packet based, error checked and corrected.

Power - UL/CSA listed 12 VAC wall transformer.

ALL SPECIFICATIONS ARE SUBJECT TO CHANGE WITHOUT NOTICE.



An ISO 9001 Company

1007 Whitehead Road Extension, Trenton, NJ 08638
(800) 327-3141 or (609) 530-1055 • Fax: (609) 530-1854
E-mail: Sales@ReesScientific.com
Visit us at: www.ReesScientific.com
European Sales: The Netherlands
(31) 71 408 68 81 • Fax: (31) 71 408 64 83