

Feel safe and secure through the Rees Scientific Automatic Failover Node Protection



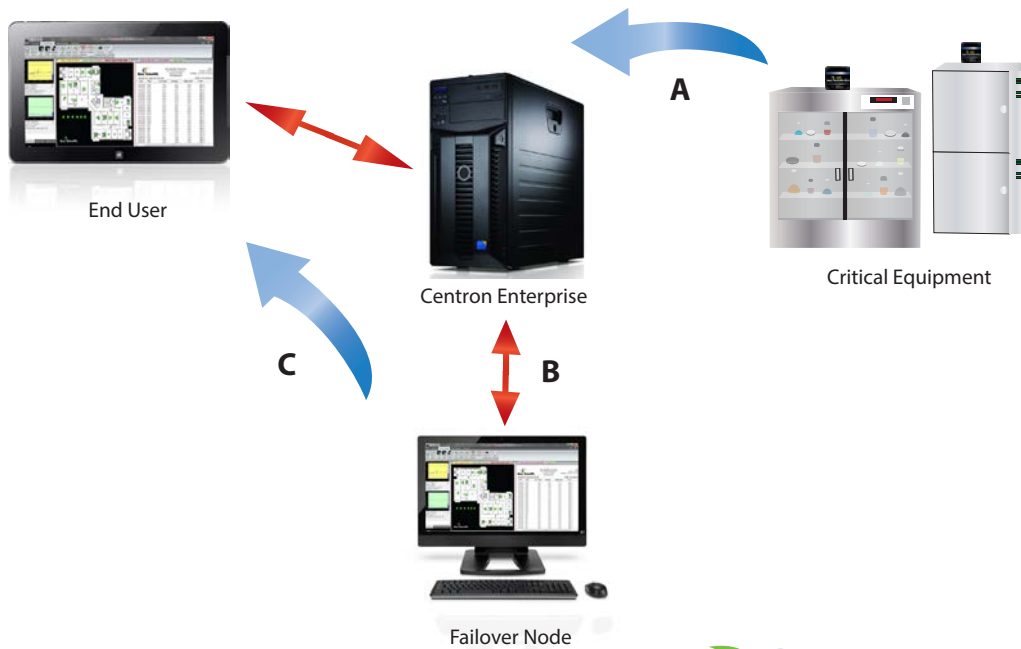
From the same company that has provided a premier level of security for more than 30 years now offers additional protection for your critical equipment. You now have the ability to protect your entire Centron Monitoring System against hardware failure through the Automatic Failover Node. The Automatic Failover Node continuously monitors your main node and takes over if a problem occurs. It also protects against failure of inter-site communications. If a remote site falls out of contact with the main site, the Automatic Failover Node will take over and provide full data logging and alarm handling functions. This node can be located in the server room or any workstation and can be easily configured.

Protects against failure of:

- * Main node hardware
- * Power failure
- * Phone lines/Dialers
- * Network connection failure
- * Database connection
- * Remote Sites

Ideal for:

- * All critical systems where service interruption could cause serious issues
- * Systems with one or more remote sites



A) Critical equipment data is being monitored in real time on clients Centron Enterprise node.

B) Failover Node is installed and constantly monitors main node.

C) In the event there is an issue with the operation of the main node or remote site, the failover node takes over monitoring your critical equipment and will alert the end user.

