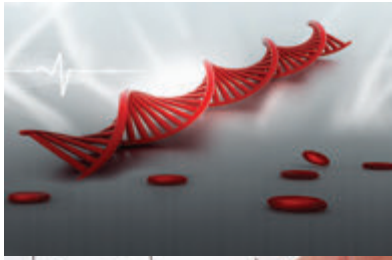


The Centron Presidio Monitoring System



About Rees Scientific



Rees Scientific specializes in protecting your valuable assets. Since 1982, Rees Scientific has been the industry standard for automated temperature monitoring and automated watering. Today, we continue to lead the field, taking input from our clients and learning from their environmental challenges. We ensure that critical equipment and devices are monitored and maintained. Rees Scientific will continue to build products and services that help provide resolutions for our customers. Our goal is to be the quality provider of systems, services and solutions for our clients for many years to come.

Rees Scientific works with a wide range of industries, from Pharmaceutical to Blood Banking, Laboratory Animal Research to Biotech and Hospitals. Rees Scientific has become the standard by which other monitoring systems are judged.

As an ISO 9001:2008 Company, Rees Scientific is constantly upgrading policies, procedures, and protocols to comply with today's highly regulated environments. Our Windows® based systems are fully validated and 21CFR11 compliant. Annual and Bi-annual Validations include all software upgrades, and contain over 1000 pages of test protocol. Our IQ/OQ validation protocols are regarded as the industry's most extensive and are designed to meet today's stringent standards. Automated daily printouts, alarm notification, audit trails and complete data encryption are just a few of the standard features to help you meet regulatory requirements.

Our systems are constructed according to your needs. We carefully review each project to design a system that best meets the current and future needs of your facility.

We Monitor Critical Equipment such as:

- Stability chambers
- Refrigerators
- Freezers
- LN2 tanks
- Incubators
- Animal holding rooms
- Clean rooms
- Ultra-low freezers
- Cold rooms

We monitor Critical Parameters such as:

- Temperature
- Humidity
- Differential pressure
- Lighting control
- Carbon dioxide
- Oxygen
- Light
- Air changes per hour

Innovation through Automation

A single Centron Presidio system can monitor a diverse facility with multiple locations while providing instant data access and sophisticated analysis right from your desktop computer, tablet or phone.

Our system ...

- * Is designed from the ground up to monitor critical equipment and areas 24/7/365. It's easily expandable to fit every customer's needs, large or small. Whether you're monitoring a few inputs or over 1,000 points at an enterprise level, Rees Scientific's Centron Presidio can fit the bill!
- * Has the industries most sophisticated telephone alarm notification, as well as text messaging and e-mail.
- * Provides a secure encrypted SQL or Oracle Data Engine utilizing crystal reports.
- * Can be stand alone, network or web based.
- * Can be hard wired, wireless, WiFi or chirper based.
- * Can be accessed from your PC, a tablet or a smart phone.
- * Provides automated daily printouts, alarm notification, audit trails and complete data encryption which are just a few of the standard features that help you meet your AAALAC, AABB, CAP, FDA, GAMP, GxP, HACCP, Joint Commission, USP 797 or other regulatory requirements.

Our **Centron Presidio All-in-one** system is a complete solution for your monitoring needs. It provides numerous enhanced features, higher performance and an entirely improved workstation experience. This new system offers a smaller footprint, comes equipped with the latest Windows® operating system and our new Centron Presidio Software. The system can be stand alone or fully integrated with the customers' existing IT infrastructure. Moreover, it provides extremely reliable hardware, enhanced buffering, and increased security.

Features/Options:

- | | |
|------------------|--|
| -Watch Dog Timer | -Stand alone or networked |
| -Dead Man Alarm | -Ability to upgrade existing towers or wall mounts |
| -Battery back up | |

The **Centron Presidio Enterprise** offers a more powerful, more reliable and more scalable centralized monitoring system. It employs RAID technology that duplicates data across multiple drives to provide full redundancy. Two disks each store exactly the same data, at the same time, at all times.



Automated Monitoring

Compliance

Meet today's toughest standards with total support documentation. Designed to meet FDA, GxP, GMP, AABB, Joint Commission, AAALAC, USDA and other regulatory requirements.

Protection

Safeguard valuable assets, efforts and products.

Time Preservation

Save energy and resources with streamlined, automated data collection.

Validation

Full software validation and on-site IQ/OQ, including calibration, probe verification and user training. Premium calibration services available.

Networking

Operates over existing TCP/IP, LAN/WAN infrastructure. Multi-user, multi-building, multi-site capability or web based operating over corporate Intranet or Internet.

"A complete
Automated
Temperature
Monitoring
Solution."



"We were able to
customize our
system according
to our needs."



Centralized Alarm Notification

Get alarm notification via local sonic, interactive dialed telephone, escalating e-mail and text messaging, day and night.

Cost Control

Reduce losses and limit your exposure to risk.

Report Generation

User-defined reports based on time, date or activity. Customizable reports with Crystal Reports.

Centralized Data Collection

Reducing the costs and time associated with chart or manual recordings while increasing accuracy.

Our Systems

With our next generation V.2 Wireless modules, you can now have it all - data reliability, robust security, wireless flexibility and the expertise and support of the industry's premier provider of Environmental Monitoring Solutions.



Advantages of Wireless Monitoring:

- *Eliminate Wiring -Save Materials & Resources
- *Easily Relocate Equipment
- *Quick and Clean Installs
- *Flexibility



The Rees WiFi system provides the same great reliability, security & flexibility as the V.2 Wireless system. It's designed to reduce the overall installation process, the line of WiFi transmitters utilize your existing infrastructure to minimize site impact and get the system running fast. It's available with the full line of sensors including temperature, humidity, light, differential pressure, etc.

V.2 Offers:

- *Data Buffering at Transmitter Level
- *Battery Alarm
- *Reliable Two-way Communication
- *Self-healing Mesh Network
- *Compatible with existing sensors and Rees hardware



Notifications



Rees offers the most robust and secure notification of events and alarms. The system also provides real-time self diagnostic tools and alerts.

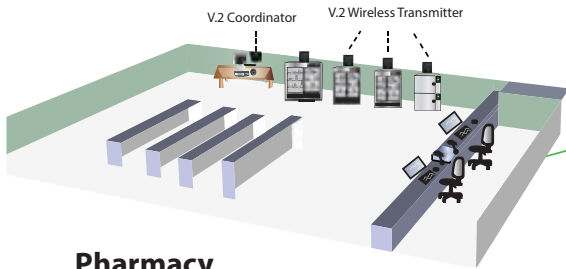
Hard Wired



For those that prefer a traditional wired system, Rees has you covered. Our wired systems:

- * Are reliable and offer many buffering options
- * Can use existing wiring infrastructure
- * Are preferred with stationary equipment
- * Can be combined with our other systems
- * Can run on the network or be stand alone

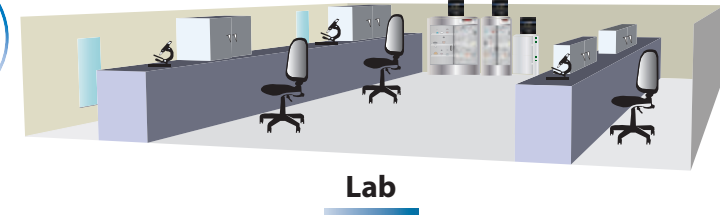
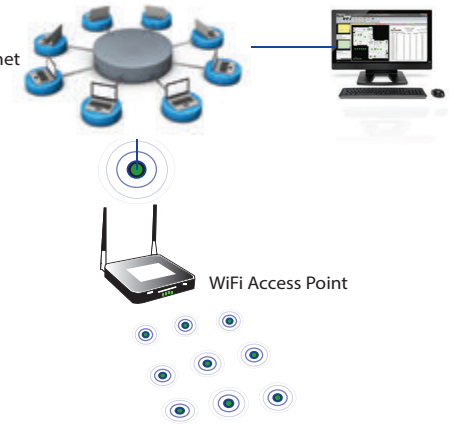
V.2 Wireless Configuration



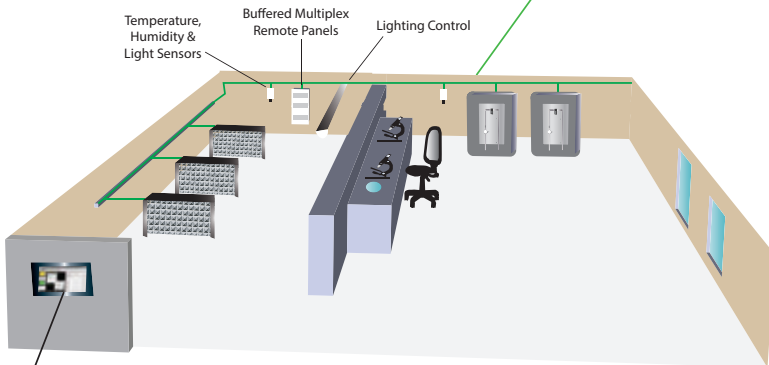
Pharmacy

LAN/WAN Corporate Intranet or Internet

WiFi Configuration



Hard-Wired Configuration



Research

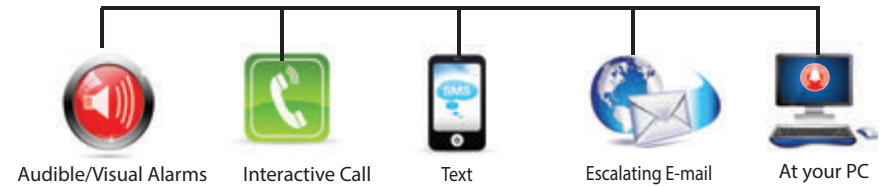


Failover Node Protection



(begins monitoring in the event of main node failure)

Notification





The Centron Presidio is our most secure, user friendly and intuitive software yet. It is a valuable transformation from the previous version and offers many new exciting features.

Additional Features:

- * Ribbon bar layout for better navigation
- * Tabbed programming menus that are user friendly
- * Improved graph quality
- * All the nodes in the system are color coded and contain tabs for ease of use
- * Updated and enhanced reports
- * Automated push reporting - where PDFs are generated automatically

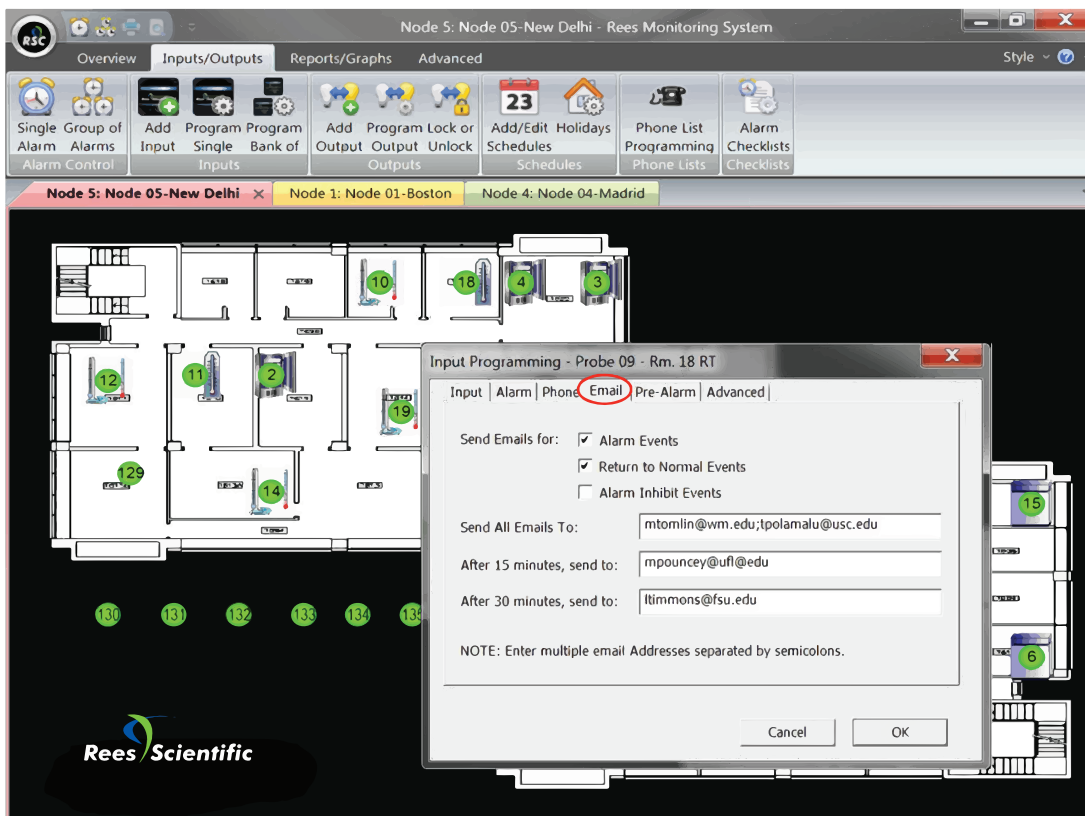
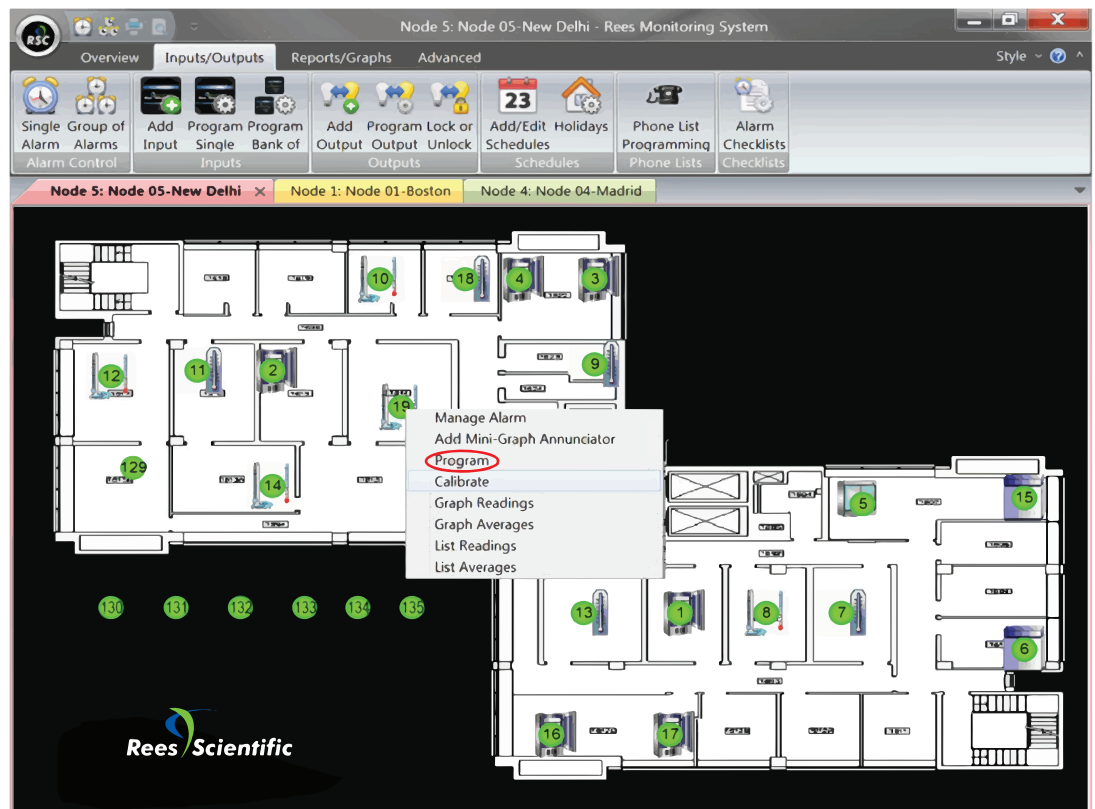
The screenshot displays the Centron Presidio software interface. At the top, a ribbon bar contains tabs for Overview, Inputs/Outputs, Reports/Graphs, and Advanced. Below the ribbon, a toolbar offers various functions such as 'Single Group of Alarm Alarms', 'Add Program Input', 'Add Program Output', 'Program Lock or Unlock', 'Add/Edit Schedules', 'Holidays', 'Phone List Programming', and 'Alarm Checklists'. The main workspace is divided into several panels:

- Left Panel:** Contains two line graphs. The top graph shows a temperature reading for 'V1 071 - Probe 071' with a status of 'Inhibited' and limits of -2.0 to 4.0. The bottom graph shows a reading for 'V1 068 - Probe 068' with a status of 'Normal' and limits of -30.0 to -10.0.
- Center Panel:** Displays a floor plan map with various nodes (01-16) marked with colored circles, representing different monitoring points in the facility.
- Right Panel:** Shows a 'Node 05-New Delhi - Current Readings' report. It includes the Rees Scientific Corporation logo and contact information (1007 Whitehead Road Ext., Trenton, NJ 08638). The report is dated 6/19/2012 and provides a detailed table of readings for 'Input 68: Probe 068' at 'Node: Node 01-Boston'.

Date	Time	Low Limit	Reading	High Limit	Units
6/19/2012	15:00	-30.0	-25.1	-10.0	Deg. C
6/19/2012	15:30	-30.0	-25.8	-10.0	Deg. C
6/19/2012	16:00	-30.0	-26.5	-10.0	Deg. C
6/19/2012	16:30	-30.0	-27.1	-10.0	Deg. C
6/19/2012	17:00	-30.0	-27.4	-10.0	Deg. C
6/19/2012	17:30	-30.0	-27.4	-10.0	Deg. C
6/19/2012	18:00	-30.0	-27.0	-10.0	Deg. C
6/19/2012	18:30	-30.0	-27.0	-10.0	Deg. C
6/19/2012	19:00	-30.0	-27.1	-10.0	Deg. C
6/19/2012	19:30	-30.0	-26.5	-10.0	Deg. C
6/19/2012	20:00	-30.0	-26.1	-10.0	Deg. C
6/19/2012	20:30	-30.0	-26.1	-10.0	Deg. C
6/19/2012	21:00	-30.0	-26.3	-10.0	Deg. C
6/19/2012	21:30	-30.0	-26.5	-10.0	Deg. C
6/19/2012	22:00	-30.0	-26.6	-10.0	Deg. C
6/19/2012	22:30	-30.0	-26.3	-10.0	Deg. C
6/19/2012	23:00	-30.0	-26.1	-10.0	Deg. C
6/19/2012	23:30	-30.0	-25.8	-10.0	Deg. C
6/20/2012	0:00	-30.0	-25.3	-10.0	Deg. C
6/20/2012	0:30	-30.0	-25.0	-10.0	Deg. C
6/20/2012	1:00	-30.0	-24.9	-10.0	Deg. C
6/20/2012	1:30	-30.0	-24.3	-10.0	Deg. C
6/20/2012	2:00	-30.0	-24.1	-10.0	Deg. C
6/20/2012	2:30	-30.0	-24.2	-10.0	Deg. C
6/20/2012	3:00	-30.0	-24.5	-10.0	Deg. C
6/20/2012	3:30	-30.0	-24.9	-10.0	Deg. C

The new software displaying the ribbon bar, enhanced maps, improved reading reports and annunciator panel.

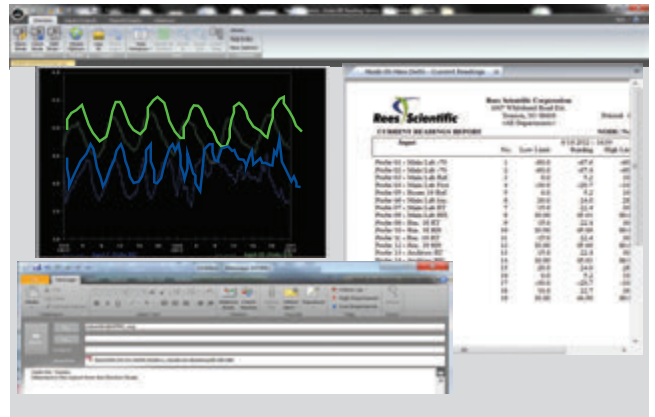
Each node is color coded and tabbed for ease of use. Easily program your inputs with just a click.



Tabbed programming menus are user friendly.

Documented Excellence

Whether a routine reading history or alarm history, every Centron Presidio report gives a detailed, easy to understand, accurate account that users find invaluable on many levels. All information, from every node in your system, is permanently logged to the Readings or Event History Files and is encrypted to ensure data integrity. You can now fully document how alarms are handled, produce complete audit trails and print information-rich event history reports, on demand.



Event Reports allow you to view alarm, programming and other events with a complete GMP compliant audit trail. View or print these reports selected by date and input name, number, or event types. A few examples of event types include alarm messages, alarm disable, alarm reset, error messages and program changes. You can also print notes or comments that have been entered regarding specific events.

21 CFR 11 (Electronic Signatures) encrypted files, dual element signing of user actions, intruder account lockout with administrator notification, password length control and expiration, comment expected for user actions, even online review and approval of records with electronic signatures. We have it all.

Graphs of readings and daily highs, lows and averages are available at the touch of a button. Touch graphed points on-screen and see complete and accurate details.

Reports of readings, highs, lows, averages, and even mean kinetic temperatures are easily produced for individual inputs, all inputs, or individual departments. Automatic daily printouts are an option for all reports and graphs.

Program Change Audit Trail documents what a given condition was before, what it was changed to, who made the change, when and why.

Running Log provides documentation of all events, alarm conditions, programming and calibration changes for all selected nodes.

Real-time readings are simply a click away. Name, number, status, current reading, low and high limits are instantly available.

Color-coded icons display real time changes in a probe's status.

Alarm Instruction Forms that you create appear in the alarm control panel ensuring the proper handling of any alarm situation.

Alarm handling from real-time display of probes allows you the option of entering comments or notes regarding the event.



Rees Scientific



Regardless of your location, our 24/7/365 technical support team ensures needs are responded to promptly and closed out correctly. Our project managers and technical support teams are experienced and dedicated to our customers. Together, they ensure that your system is well maintained, up-to-date and in proper working order.

To our knowledge, no other monitoring providers even come close to the 70 plus dedicated factory employed, factory trained field technicians we have located regionally. Our fleet of stocked service vehicles are ready to be dispatched to handle all on-site service.

Main Office
609.530.1055
sales@reesscientific.com

Providing the highest quality of environmental monitoring and automated watering solutions that deliver unparalleled documentation, notification, validation and loss prevention.

1007 Whitehead Road Ext. Trenton NJ 08638
P 800.327.3141 F 609.530.1854
sales@reesscientific.com www.reesscientific.com

Copyright 2013 Rees Scientific Corporation All rights reserved.
PRNT2077


Rees Scientific

An ISO 9001:2008 Company

