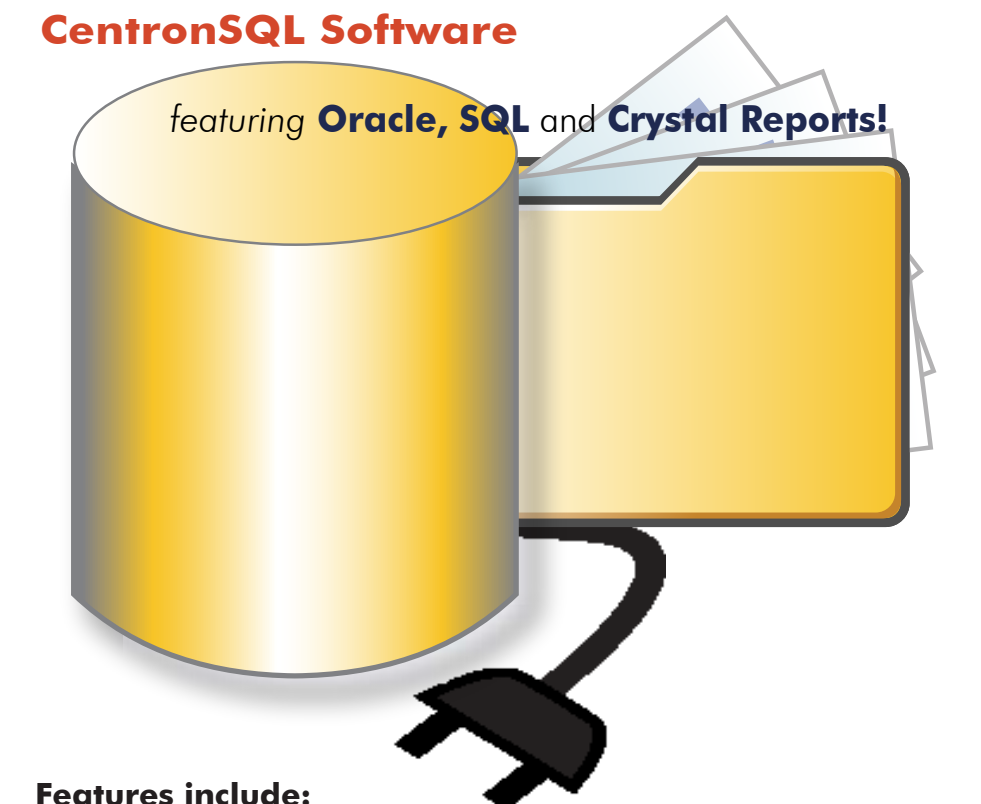


**Security, Ease of Use, Integrity, Sharing, Quality.**

...these are just a few of the data challenges facing research and manufacturing facilities today.

Rees Scientific, the industry leader in loss prevention and compliance, is proud to introduce its most powerful tool to date -



- Features include:**
- ☐ • Oracle OR SQL Server Data Engine
  - Superior Multi-User Operation
  - Rock Solid Stability
  - Industry Standard Data Formats
  - Dramatically Improved System Overview
  - Advanced and Custom Reports - SQL Selected Data
  - ☐ ☐ Shows What you Need to Know, When you Need to Know It.
  - BuddyWatch System Protects All Nodes
  - Over 30 Enhancements over Previous Versions
  - ☐ • GxP, GAMP and 21 CFR 11 Compliant
  - ☐ • 1000+ Page Validation Test Reports Now Available!

# The Ultimate in High Security Monitoring

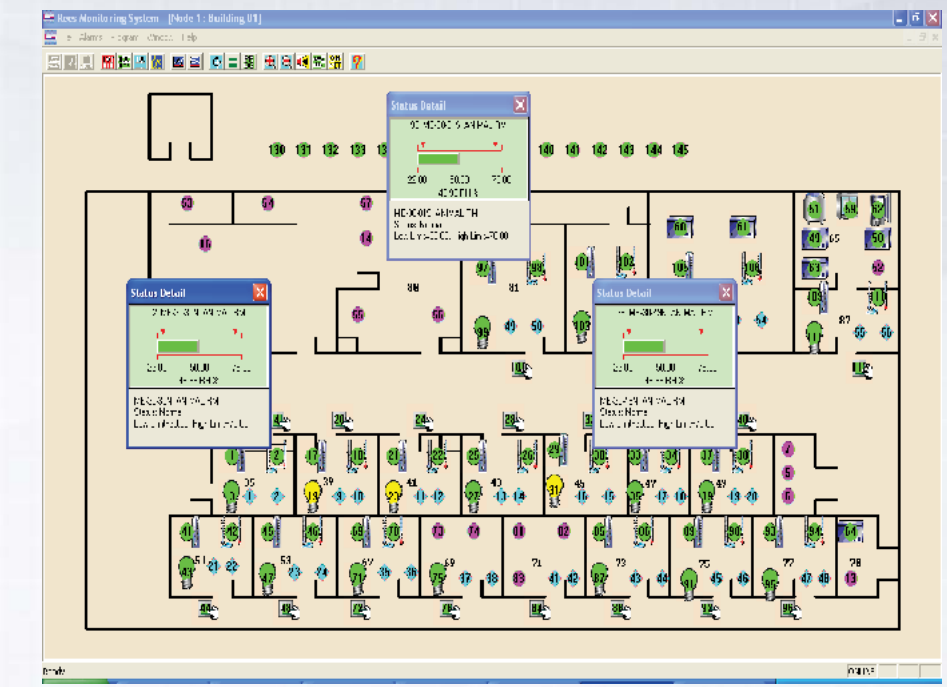
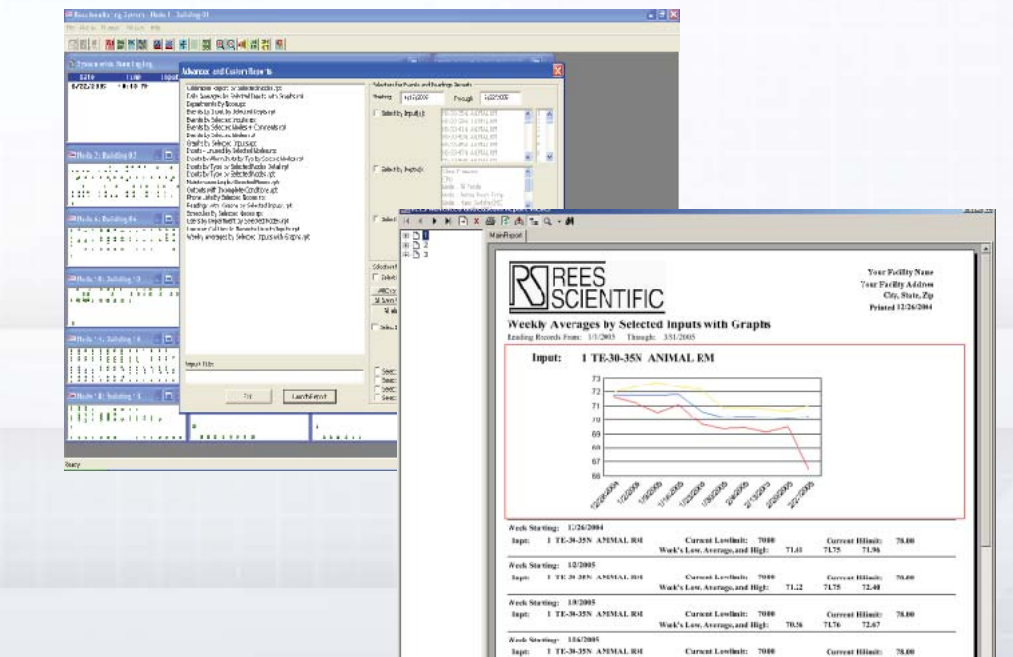
**CentronSQL** : This powerful new solution allows organizations the **Best of Both Worlds**. Critical GxP audit trails and system program data are kept in encrypted files. Additional Open tables also exist allowing easy access for user. If changes are made to open tables it cannot affect system function or standard reports.

**CentronSQL allows:**

**Support for Oracle or SQL Server Database Engines**  
Earlier Centron systems worked with a proprietary flat-file database and managed the multi-user requirements through the use of file-locking and record-locking. This had several disadvantages. First, though many users could use the system at a time inhibiting alarms and printing reports, only one user could program at a time. Second, the reliability of such flat-file systems is essentially always inferior to the reliability of clientserver database systems. CentronSQL allows the use of either Oracle or Microsoft's SQL Server as the database engine for the system. Centron Nodes are shipped with Microsoft's MSDE 2000 data engine which is suitable for use as the main data engine for small systems.

**No More Network Share**  
CentronSQL does not need or use a network file share. This provides greatly increased security and reliability due to the fact that individual users have no access to system files.

**Advanced and Custom Reports**  
A vast new array of analysis reports are now available built-in to the Centron system. They can be easily accessed from any workstation. Any of these reports can be selected by multiple criteria. Select only events with Comments, only "Nobody Home" events, only events with an open investigation pending, only events pertaining to a specific input, system wide events pertaining to maintenance issues, etc.



**New Software Alarm Features**

**Email on alarm**  
All CentronSQL alarms permit email on alarm. The email sent includes the input number, name, current reading, low limit and high limit. Up to 50 simultaneous users per Centron node (vs. 10 before.)

**DatabaseWatch Alarm**  
The system watches over the database engine. Each node can be programmed to dial out after a reasonable delay to report that the database engine is no longer online. This is not an emergency since the entirely independent nodes will continue to provide alarms and log data just as they normally would. When the database comes back online, they log back in and update the database with everything that occurred in between.

**BuddyWatch Alarm**  
CentronSQL watches over all the nodes. If the node goes offline for any reason, the BuddyWatch alarm will go off, allowing for voice telephone calls to be made, and all standard alarming functions to occur.

**MPX Comm and Battery Alarm**  
Each CentronSQL MPX subpanel is monitored at all times. If one of the panels goes offline for any reason, the MPX Comm or MPX Battery Alarm will go off. This allows for voice telephone calls to be made, and all standard alarming functions to occur.

**New Input Program Features**

**Programmable icon types by inputs.**  
Individual inputs can be given icons that represent what the input monitors. This provides for instant comprehension of the big picture on the floor plan map.

**Independent Logging Rates for each input permitted.**  
Each input can be assigned its own, independent rate, separate from the programmed global logging rate.

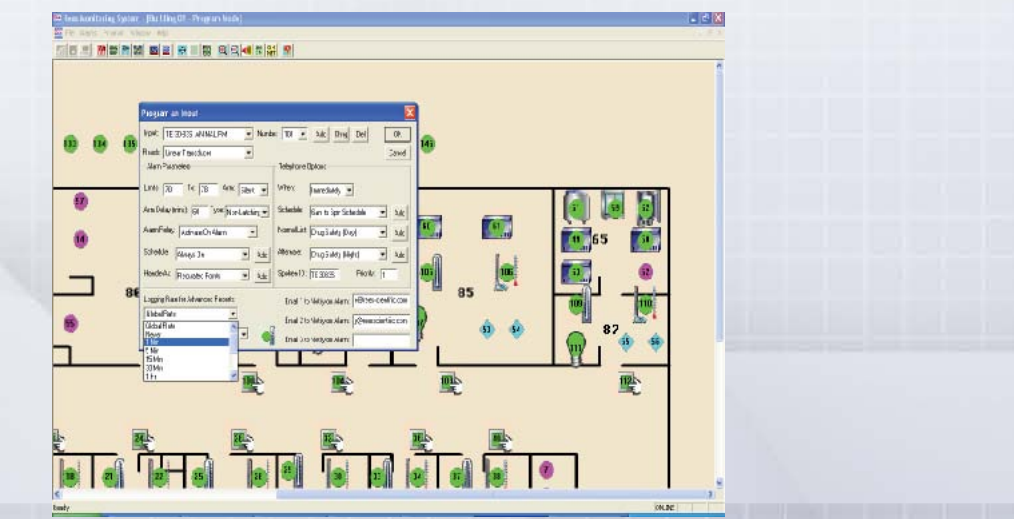
**Logging Rates to 1 per minute permitted.**  
For those inputs that really need a lot of data, you can assign a really fast logging rate.

**Logical to Physical probe mapping.**  
You can move a system input from one place to another and keep the original input number. This allows all of the existing data to continue to track with the piece of equipment that was moved at the logical input number, even though the physical input number has changed.

**Unused input icons have a different color (violet)**  
It is easy to locate any unused inputs since they appear in violet.

**Graphical Input Status Box**  
A new graphical input status box shows more information and is easier to understand at-a-glance.

The input name and number, input status, the current reading, and the low and high parameters are given in the detail box. In addition, the progress of inputs that are phoning, when they will phone next, and when an inhibition will time out are now shown. You can show the detail box for many inputs simultaneously. Just touch input after input. To close the detail box, click on the X with the left mouse button.



**Additional Software Enhancements**

**Calibration Log Printout**

**Maintenance Log Printout**

**Inputs line up in order with button press, return to locations when released.**

Press button and the inputs are in numerical order – easy to find the input by number. Press the button again and presto, the inputs are back in their assigned locations.

**Single button makes a username valid in all nodes.**  
A great time saver in large systems.

**System Configuration Notes**  
Locations of nodes, panels and services can be viewed.

- System notes in Node Wide dialog
- Server location can be added into icon's programming
- Buddy location can be added into icon's programming
- MPX location can be entered into MPX Comm Alarm icon programming
- Battery change date can be entered into MPX Comm Alarm icon programming

**Icon's Scale with the Map**  
In very small map sizes, the icons turn into round circles or squares. Programmed icon appears when resolution can support it.

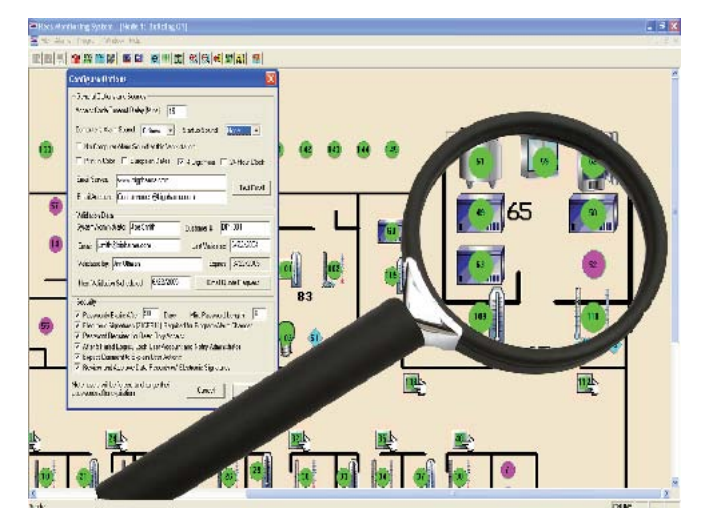
**Maximum Schedules raised from 8 to 64 Maximum**  
This allows for far more output flexibility for sites that are controlling lighting schedules.

**Maximum Input Groups/Departments raised from 16 to 64**  
This allows each room of an animal facility to be assigned its own input group. This then permits room-by-room events and readings printouts.

**Maximum comment size per event raised from 500 to 2000 characters**  
This permits much more detailed alarm response forms to be used with the system to log exactly what happened in the event of any alarm.

**True zoom and scroll on the node map windows.**

This allows the view to be zoomed in, providing an enlarged, more detailed picture of an area that is being monitored. There are 10 levels of zoom available. When the map is zoomed in, scroll bars appear to allow you to position your view where you will. If a point on the map is selected prior to touching the zoom button, the system will center the zoom on the selected point.



**Maintenance Log Items as Events**  
A maintenance log item can be introduced into the event log at any time. This allows you to print a report of the maintenance log.

**Calibrations as a Special Event Type**  
All type of sensors can now be calibrated using the Calibration dialog box. In addition, no change needs to be made to log the fact that a Calibration was done. Just press the "Calibrate" button, and an event is logged. This allows for calibration reports by input. The calibration report shows the deviation that was measured at each input and can be an invaluable aid in determining if a sensor is excessively unstable over time.

In addition, the **CentronSQL Validation, a complete demo, and the CentronSQL User's Manual** are now available. Email your request for these items to [sales@reesscientific.com](mailto:sales@reesscientific.com) and we will send you a CD.