

Introducing Centron Presidio



The industry leader for environmental monitoring, asset protection and loss prevention is proud to introduce our most secure, user friendly and intuitive software yet. It is a valuable transformation from the previous version and offers many new exciting features. Protecting your valuable research, freezers and refrigerators never looked so good!

New Features:

- * Ribbon bar layout for better navigation
- * Tabbed programming menus that are user friendly
- * Improved graph quality
- * All the nodes in the system are color coded and contain tabs for ease of use
- * Updated and enhanced reports
- * Automated push reporting - where PDFs are generated automatically

The screenshot displays the Rees Scientific monitoring software interface. At the top, a ribbon bar contains tabs for Overview, Inputs/Outputs, Reports/Graphs, and Advanced. Below the ribbon bar are icons for various functions: Single Group of Alarm Alarms, Add Program Input, Program Bank of Inputs, Add Program Output, Program Lock or Unlock, Add/Edit Schedules, Holidays, Phone List Programming, and Alarm Checklists. The main interface is divided into several panels. On the left, there are two graphs showing temperature trends over time. The central panel displays a floor plan map with various nodes marked. On the right, a data table shows current readings for Node 01-Boston. The table includes columns for Date, Time, Low Limit, Reading, High Limit, and Units. The data shows a series of readings from 6/19/2012 15:00 to 6/20/2012 3:30, with readings ranging from -25.1 to -24.9 Deg. C. The interface also includes a status panel for Node 01-Boston, showing a status of Normal and a low limit of -30.0.

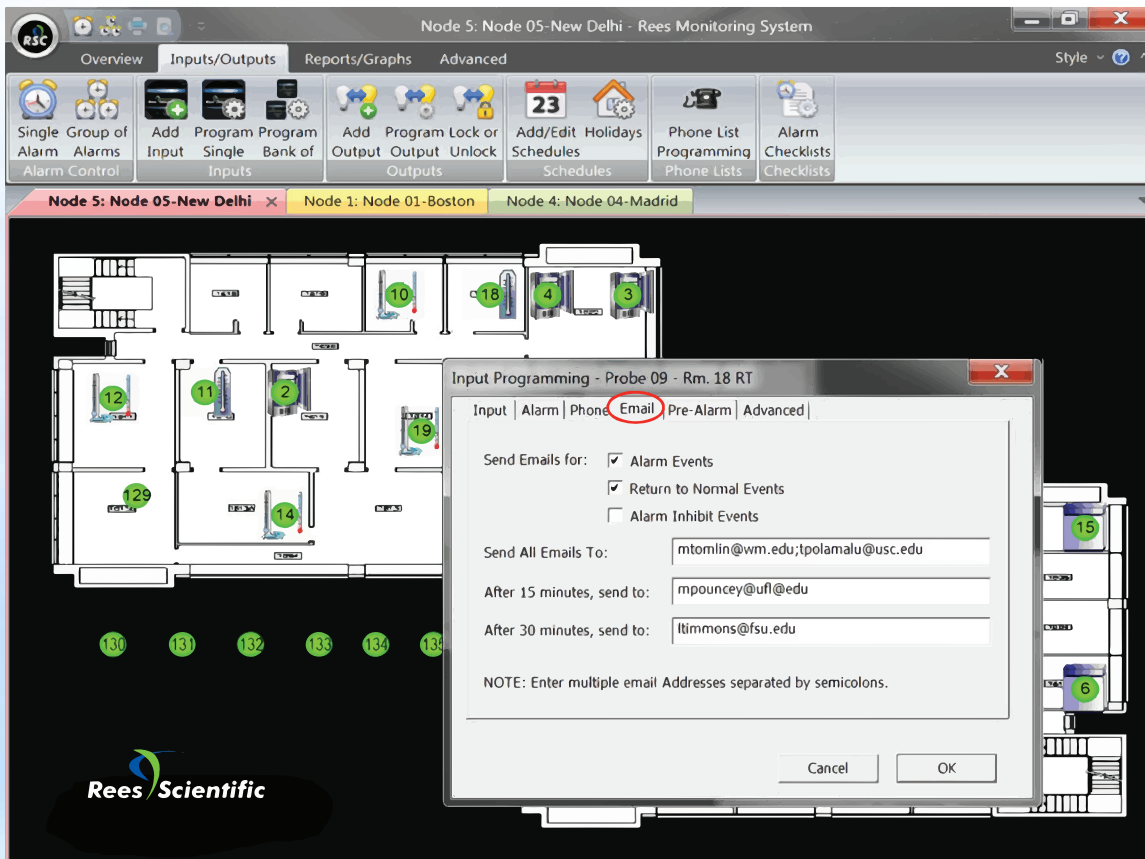
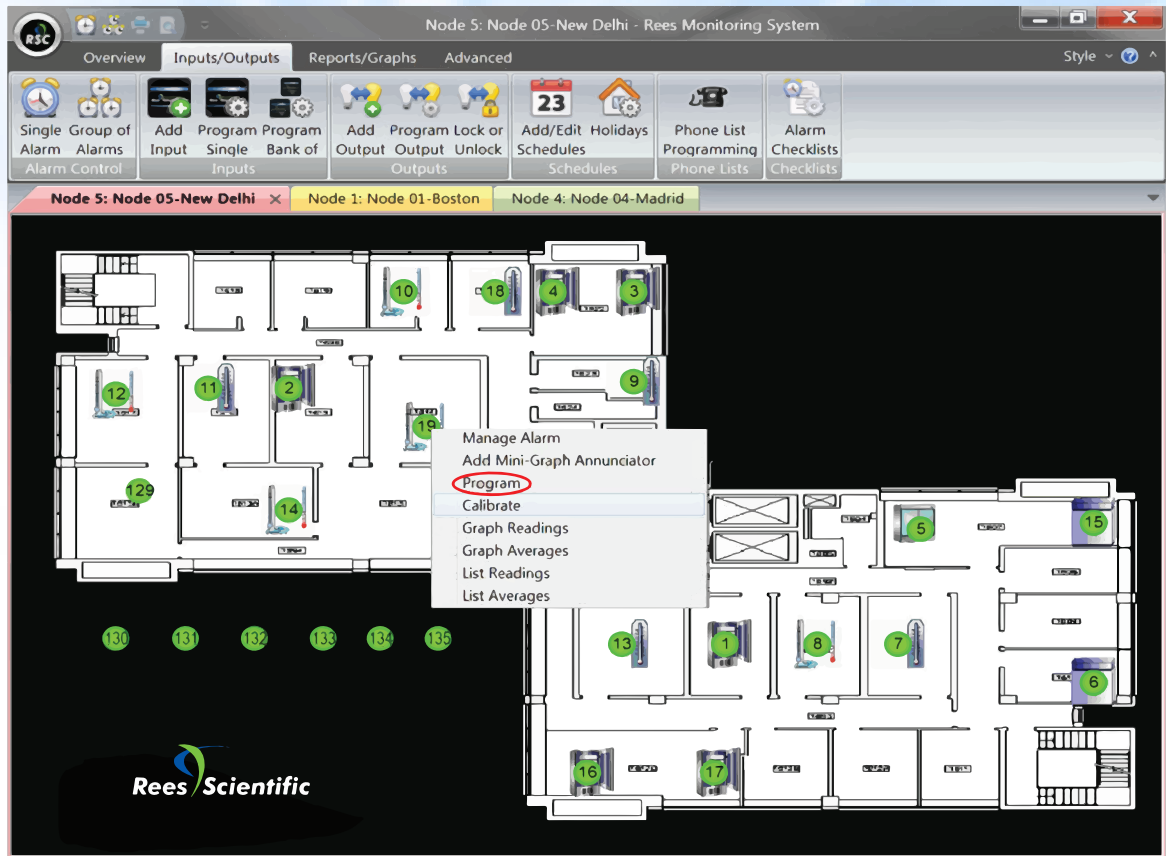
Date	Time	Low Limit	Reading	High Limit	Units
6/19/2012	15:00	-30.0	-25.1	-10.0	Deg. C
6/19/2012	15:30	-30.0	-25.8	-10.0	Deg. C
6/19/2012	16:00	-30.0	-26.5	-10.0	Deg. C
6/19/2012	16:30	-30.0	-27.1	-10.0	Deg. C
6/19/2012	17:00	-30.0	-27.4	-10.0	Deg. C
6/19/2012	17:30	-30.0	-27.4	-10.0	Deg. C
6/19/2012	18:00	-30.0	-27.0	-10.0	Deg. C
6/19/2012	18:30	-30.0	-27.0	-10.0	Deg. C
6/19/2012	19:00	-30.0	-27.1	-10.0	Deg. C
6/19/2012	19:30	-30.0	-26.5	-10.0	Deg. C
6/19/2012	20:00	-30.0	-26.1	-10.0	Deg. C
6/19/2012	20:30	-30.0	-26.1	-10.0	Deg. C
6/19/2012	21:00	-30.0	-26.3	-10.0	Deg. C
6/19/2012	21:30	-30.0	-26.5	-10.0	Deg. C
6/19/2012	22:00	-30.0	-26.6	-10.0	Deg. C
6/19/2012	22:30	-30.0	-26.3	-10.0	Deg. C
6/19/2012	23:00	-30.0	-26.1	-10.0	Deg. C
6/19/2012	23:30	-30.0	-25.8	-10.0	Deg. C
6/20/2012	0:00	-30.0	-25.3	-10.0	Deg. C
6/20/2012	0:30	-30.0	-25.0	-10.0	Deg. C
6/20/2012	1:00	-30.0	-24.9	-10.0	Deg. C
6/20/2012	1:30	-30.0	-24.3	-10.0	Deg. C
6/20/2012	2:00	-30.0	-24.1	-10.0	Deg. C
6/20/2012	2:30	-30.0	-24.2	-10.0	Deg. C
6/20/2012	3:00	-30.0	-24.5	-10.0	Deg. C
6/20/2012	3:30	-30.0	-24.9	-10.0	Deg. C

The new software displaying the ribbon bar, enhanced maps, improved reading reports and the annunciator panel.



Centron Presidio

Each node is color coded and tabbed for ease of use. Easily program your inputs with just a click.



Tabbed programming menus are user friendly and simple to use.