

# The Centron Monitoring System

*Innovation through Automation*



# About Rees Scientific

Rees Scientific specializes in protecting your valuable assets. Since 1982, Rees Scientific has been the industry standard for automated temperature monitoring and automated watering. Today, we continue to lead the field, taking cues from our clients and their environmental challenges. Our goal remains sharply focused to ensure that your critical equipment and devices are monitored and maintained to set a standard every second of every day without exception and without fail.

## Compliance

Meet today's toughest standards with total support documentation - designed to meet FDA, GxP, GMP, AABB, AAALAC, Joint Commission, USDA and other regulatory requirements.

## Protection

Safeguard valuable assets, efforts and products.

## Cost Control

Reduce losses and limit your exposure to risk.

## Time Preservation

Save energy and resources with streamlined, automated data collection.

## Centralized Alarm Notification

From local sonic to voice telephoned to e-mail alarm capabilities, day and night.

## Centralized Data Collection

Reducing the costs and time associated with chart or manual recordings while increasing accuracy.

## Validation

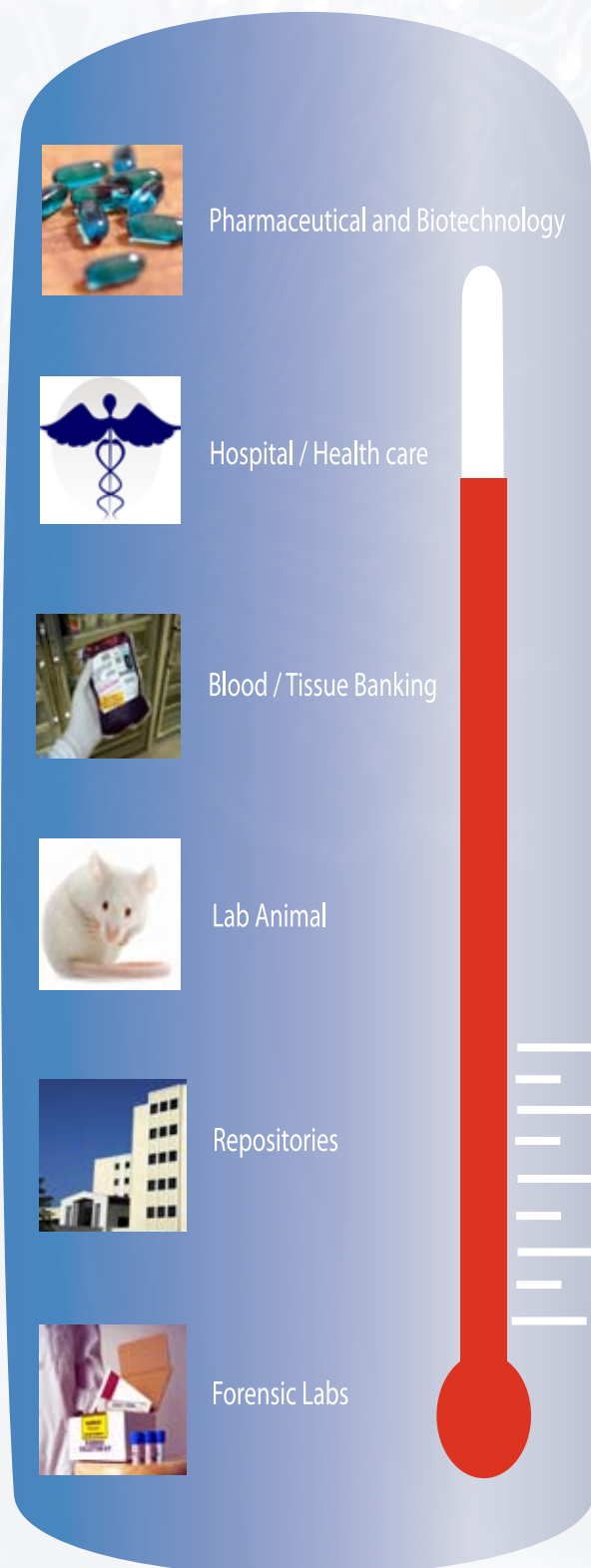
Full software validation and on-site IQ/OQ, including calibration, probe verification and user training. Premium calibration services available.

## Networking

Operates over existing TCP/IP, LAN/WAN infrastructure. Multi-user, multi-building, multi-site capability or web based operating over corporate Intranet or Internet

## Report Generation

User-defined reports based on time, date or activity. Customizable reports with Crystal Reports.





# The Centron Monitoring System

A single Centron system can monitor a diverse facility with multiple locations while providing instant data access and sophisticated analysis right from your desktop computer.

## The Centron System...

- Is designed from the ground up to monitor critical equipment and areas 24/7/365. The system is easily expandable to fit every customer's needs, large or small. Whether you're monitoring a few inputs or over 1,000 points at an enterprise level, Rees Scientific's Centron can fit the bill!
- Has the industries most sophisticated telephone alarm notification, as well as text messaging and e-mail.
- Provides a secure encrypted SQL or Oracle Data Engine utilizing crystal reports.
- Can be stand alone, network or web based.
- Can be either Hard wired/ Wireless or Both



### V.2 Wireless includes:

- Data Buffering
- Low Battery Alarm
- Local Alarm Capabilities
- Self-Healing Mesh Network
- Reliable Two Way Communication

### Hard Wired system includes:

- Multiplex Remote Panels
- Data Buffering
- Network Capabilities
- Trouble Alarms

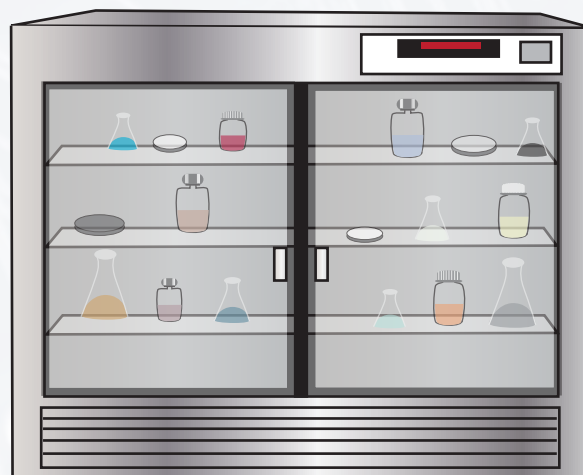
- Provides automated daily printouts, alarm notification, audit trails and complete data encryption which are just a few of the standard features that help you meet your AAALAC, AABB, CAP, FDA, GAMP, GxP, HACCP, Joint Commission, USP 797, or other regulatory requirements.

### We Monitor Critical Parameters such as:

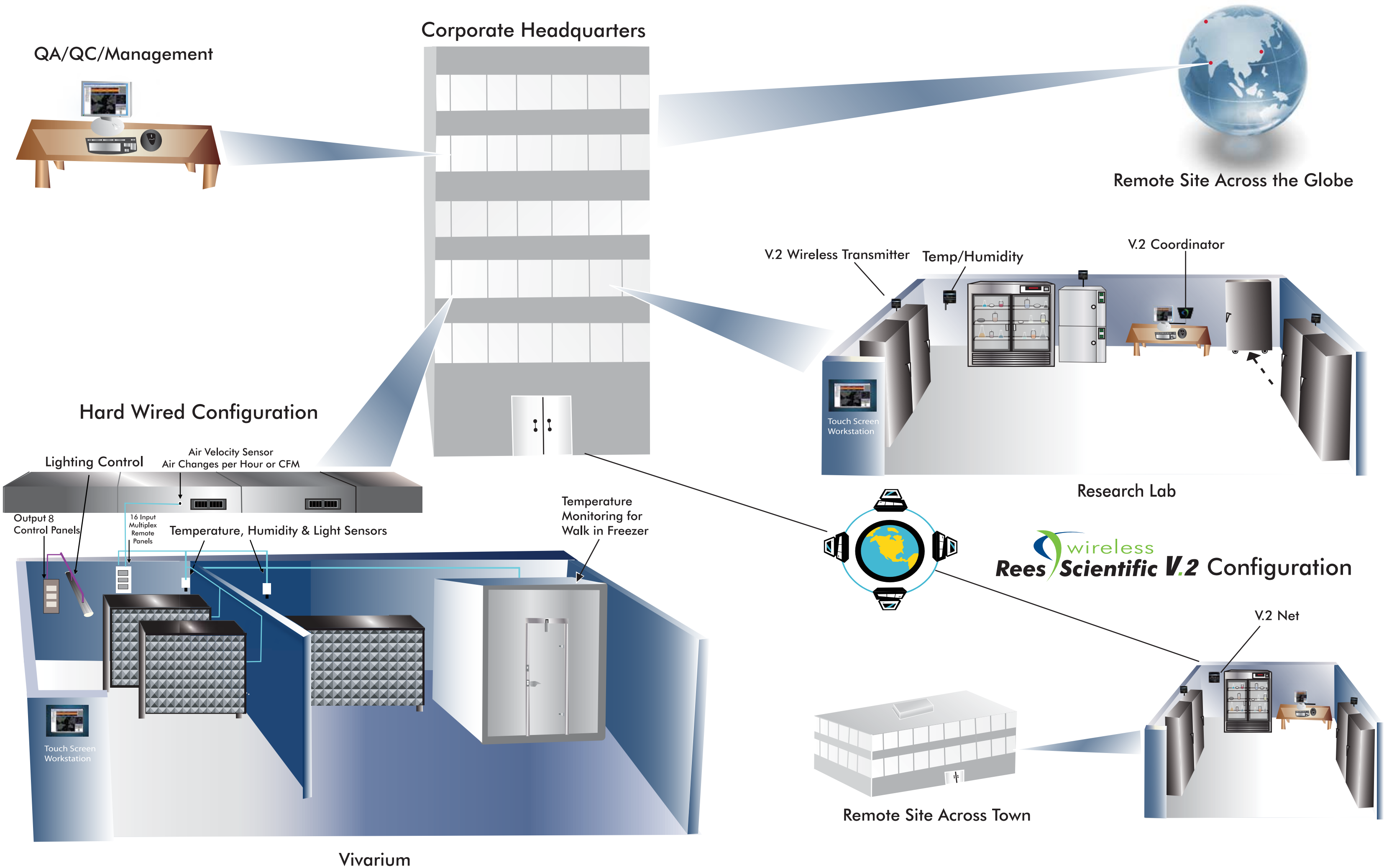
- Temperature
- Humidity
- Differential Pressure
- Lighting Control
- Carbon dioxide
- Oxygen
- Light
- Air Changes per hour

### We Monitor Critical Equipment as:

- Stability Chambers
- LN<sub>2</sub> Tanks
- Incubators
- Animal Holding Rooms
- Clean Rooms
- Refrigerators
- Freezers
- Ultra-low Freezers
- Cold Rooms



# Hard wired, Wireless or Both...Rees Scientific Can Deliver





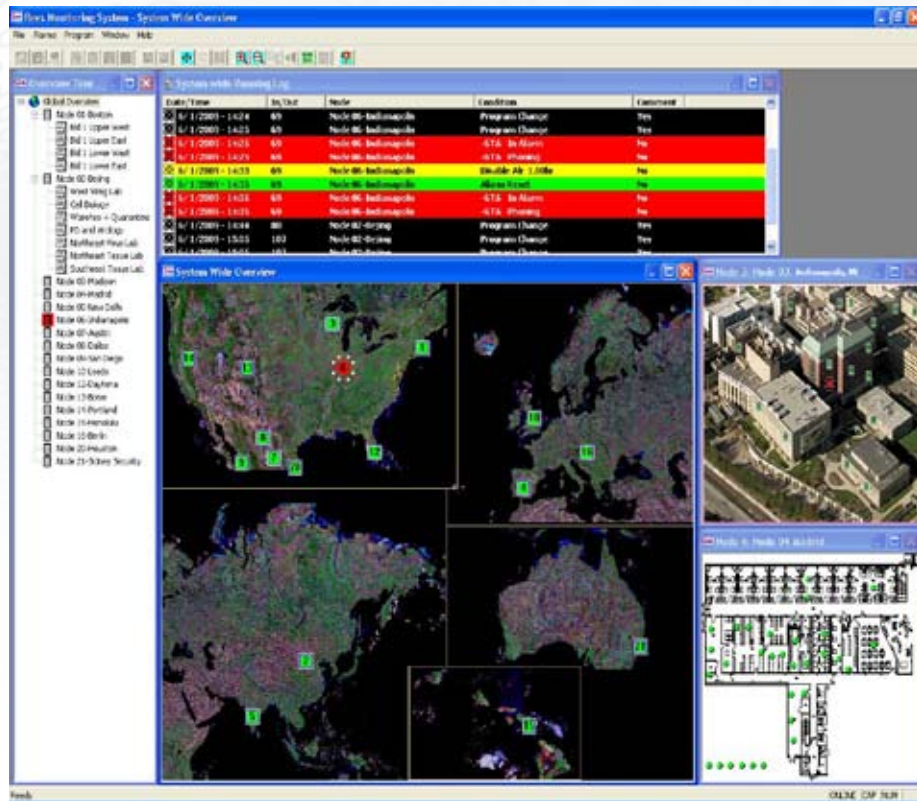
# Documented Excellence

Whether a routine reading history or alarm history, every Centron report gives a detailed, easy to understand, accurate account that users find invaluable on many levels. All information, from every node in your system, is permanently logged to the Readings or Event History Files and is encrypted to ensure data integrity. You can now fully document how alarms are handled, produce complete audit trails and print information-rich event history reports, on demand.

**Event Reports** allow you to view alarm, programming and other events with a complete GMP compliant audit trail. View or print these reports selected by date and input name, number, or event types. A few examples of event types include alarm messages, alarm disable, alarm reset, error messages and program changes. You can also print notes or comments that have been entered regarding specific events.

**Graphs** of readings and daily highs, lows and averages are available at the touch of a button. Touch graphed points on-screen and see complete and accurate details.

**Reports** of readings, highs, lows, averages, and even mean kinetic temperatures are easily produced for individual inputs, all inputs, or individual departments. Automatic daily printouts are an option for all reports and graphs.



**Program Change Audit Trail** documents what a given condition was before, what it was changed to, who made the change, when and why.

**21 CFR 11 (Electronic Signatures)** encrypted files, dual element signing of user actions, intruder account lockout with administrator notification, password length control and expiration, comment expected for user actions, even online review and approval of records with electronic signatures. We've got it all.

**Running Log** provides documentation of all events, alarm conditions, programming and calibration changes for all selected nodes.

**Real - time readings** are simply a click away. Name, number, status, current reading, and low and high limits are instantly available.

**Color-coded icons** display real time changes in a probe's status.

**Alarm Instruction Forms** that you create appear in the alarm control panel ensuring the proper handling of any alarm situation.

**Alarm handling** from real-time display of probes allows you the option of entering comments or notes regarding the event.

Providing the highest quality environmental monitoring and automated watering solutions that deliver unparalleled documentation, notification, validation and loss prevention for the research community and beyond.



An ISO 9001:2000 Company

1007 Whitehead Road Ext. Trenton NJ 08638  
P 800.327.3141 or 609.530.1055 F 609.671.2751  
Sales@reesscientific.com www.reesscientific.com