



Contents

ReesCloud	2
Centron Presidio All-in-One	3
Enterprise Centron.....	4
Presidio On The Go	5
Centron Presidio Software.....	6
Software Options	7
Virtual Centron Dialers & VOIP Dialing Options	9
Automatic Failover Node Protection	11
Buffering Remote Panels	12
Z3 MPX Net Up.....	13
Z3 MPX USB Up.....	14
Multiplex-Net Input Panel with RJ45	15
Multiplex-Net Input Panel with RJ24.....	16
Instant Chamber Mapping	17
Instant Chamber Mapping (Con't)	18



ReesCloud

Rees Cloud is a real time cloud based monitoring system that provides a secure, fast and easy way to continuously monitor critical equipment and environmental conditions. It offers a cloud based, cost effective tool to monitor refrigeration, cold storage laboratory equipment and a whole host of critical environments. There is no software, PC or server required from the client, the only necessity is a data connection. Users have the ability to view the status of their equipment via an app or a browser. Just like traditional Rees Systems, with ReesCloud the data is secure and Menus are straight-forward. Rees Cloud is scalable for any clients large or small and is the first 21CFR compliant cloud system in the industry.

Optional Super User allows administrative rights for fully functional workstation software on Cloud based systems. This will permit users to access 21CFR 11 review and approvals, automatic report generation and other useful features. (Required for using mapping software module on Cloud based systems).



Type	Standard US Part #
Cloud Hosting Service	C.CLOUD-HOST
Cloud Annual Hosting Per Point	C.CLOUD-PP
Super User License	C.CLOUD-S-USER
Annual License for 5 Additional Users	C.CLOUD-UL5
Annual License for 10 Additional Users	C.CLOUD-UL10
Annual License for 20 Additional Users	C.CLOUD-UL20
Annual License for 50 Additional Users	C.CLOUD-UL50
Annual License for Additional Users	C.CLOUD-ULA

All specifications are subject to change without notice.



Centron Presidio All-in-One

The Centron Presidio All-in-one system is a complete solution for all of your monitoring needs. Each Presidio All-in-one unit monitors up to 128 inputs and can be combined and integrated for expansion. The system keeps readings and event data records to satisfy any regulatory authorities. The system provides high speed performance and complete reliability. It also offers a smaller footprint and comes equipped with Windows 10 operating system. The system can be stand alone or fully integrated with the customers' existing IT infrastructure. Moreover, it provides extremely reliable hardware, enhanced buffering, and increased security.



Specification

- Expandable up to 128 inputs.
- 32 bit architecture.
- Alarm notification via voice telephone, text messaging and e-mail.
- Infinite buffering of data collection on the Centron hard drive.
- LED Monitor.
- Smaller foot print.
- 22" monitor screen
- Works with hard wired and/or wireless sensors.
- Battery Backup.
- Software is available in English, French, German and Spanish.

Type	Standard US Part #
Centron Presidio All-in-one	C.CEN-ALL

All specifications are subject to change without notice.



Enterprise Centron

The Enterprise Centron environmental monitor offers a powerful and reliable centralized solution. With RAID Dual Level Data Redundancy, true multi-user simultaneous networking for up to 30 users, and access to the system via a web browser, the Enterprise Centron includes all of the features of the original Centron in a hardened server platform. Capable of housing up to 4 nodes, the system includes 1 node license that is authorized for up to 16 inputs with the ability to monitor up to 128 inputs. Bundled with 1 telephone dialer the Enterprise Centron can accept up to 4 individual dialers providing simultaneous alarm notification for system events.

The Enterprise Centron is designed for use with V1, V2 and Z3 wireless components and MPX-NETBUFF wired remote panels. Existing MPX-RMT panels will require a Z3-MPX or Z3-MPX-NET upgrade.



Specifications

- Expandable up to 512 inputs
- Server Operating System
- Standalone Tower or Rack mountable
- RAID-1 Data redundancy
- Database and Interface compatible with Presidio Centron Nodes/ No learning curve
- Software is available in English, French, German and Spanish.

Type	Standard US Part #
Enterprise Centron Environmental Monitor	C.CEN-ENT-3.0
The Rack Mounted Enterprise Centron	C.CEN-ENT-R3.0
License for additional 16 inputs on Centron Systems	C.I-LICENSE-16
Additional Node License	C-ENT-ADD-3.0
Optional monitor, keyboard, and mouse package	C.MON-PKG24
Enterprise Centron Software	C.CEN-ENT-S3.0

All specifications are subject to change without notice.



Presidio On The Go

Presidio-OTG is Rees Scientific's completely re-designed web interface. Monitoring your facility is now easier than ever with the touch of a finger. Monitor critical equipment from anywhere via smart phone, tablet or desktop! Presidio OTG offers enhanced user functions and increased data availability on the web such as: Advanced alarm handling and input programming capabilities. View and print reports. Ability to access lower-level maps. Upgraded graphics enhanced, real time reporting. Ability to calibrate and much more.



Specifications

Presidio On the Go is compatible with many web browsers including the latest version of Chrome, Safari, Firefox, and Internet Explorer.

Requirements

Centron Presidio Version 3 Software build 1019 or higher.

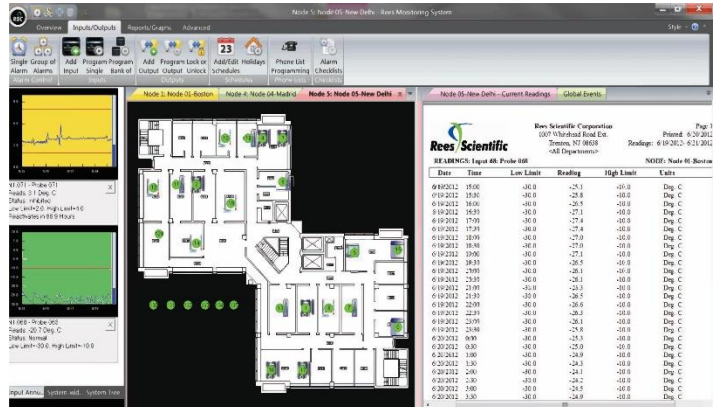
Type	Standard US Part #
Presidio On The Go	C.PRESIDIO-OTG

All specifications are subject to change without notice.



Centron Presidio Software

The Centron Presidio software monitors your critical equipment, continuously stores crucial data and alarms out through multiple channels. It's a secure, user friendly and intuitive software. Its layout is consistent with the latest version of Microsoft Windows as it offers a ribbon bar for better navigation and tabbed programming menus that are user friendly. All the different nodes in the system are color coded and contain tabs for ease of use. All information, from every node in your system, is permanently logged to the Readings or Events History Files and is encrypted to ensure data integrity. The reports offer automated push reporting where pdfs are generated automatically and are available for instant or scheduled emailing. The annunciator panel allows the user the ability to view multiple queries and graphs at the same time. The end user also has the ability to track each and every troubled input and can obtain instant real time readings. Whether a routine reading history or alarm history, every Centron Presidio report gives a detailed, easy to understand, accurate account that users find invaluable on many levels.



Specifications

Recommended Requirements:

- Operating System: Windows 10
- 1 USB port required per node

Type	Part #
Centron Presidio Software	C.PRESIDIO-3.0
Virtual Centron Presidio Server Software	C.VS-CEN-3.0

*Additional requirements may be necessary

All specifications are subject to change without notice.



Software Options

The Centron / Series II Monitoring System offers the following software upgrade options.

Type	Part #
TCP/IP Open System Software - 3 user license. Allows up to 3 users to access system simultaneously.	C.P-CAL-3
TCP/IP Open System Software - 10 user license. Allows up to 10 users to access system simultaneously.	C.P-CAL-10
TCP/IP Open System Software upgrade from 3 to 10 user license. Allows 4 to 10 users to access system simultaneously. Requires Initial Purchase of TCP-3.	C.P-CAL-ADD10
Validation kit for Centron	VAL-KIT-CEN
Map/Floorplan to enhance Windows® Software	C.WIN-MAP
Custom recorded alarm voice messages for Centron.	VOICE TAGS-1
20 additional custom recorded alarm voice messages (after initial purchase of VOICE TAGS-1) for Centron.	VOICE TAGS-2
This software option permits Events, Reading Samples, and Highs, Lows, Averages reports to be reviewed and approved at the departmental level. A user with a departmentally restricted code who has Programming Inputs permission, is permitted to approve events and readings for his/her department. The reviews/approvals appear on the reports for the department, as well as on the reports for a user with All Departments access. This allows organizations to distribute the responsibility for these reviews to departmental or laboratory managers who are better able to oversee the work flow.	C.DEPT-APVLS
Software Enhancement which allows Centrons in multiple time zones to run at local time. Requires on site activation by Rees Technician and access to network share from all workstations viewing the Rees System.	CEN-TZONE-SFT
IPV6 Software option makes the Centron Presidio fully capable communicating via the IPV6 protocol. Internet Protocol version 6 (IPV6) is the updated version of the Internet Protocol (IP), the communications protocol that provides virtually all network communications worldwide. IPV6 is replacing IPv4, and is now a standard in all modern	C.NODE-IPV6

All specifications are subject to change without notice.



<p>computer systems. The DOD requires it now. Future proof your investment by adding this extension to your Presidio software.</p> <p>Requirements</p> <ul style="list-style-type: none"> • Presidio version 3 with build 1020+ or DIACAP • One per node 	
<p>This software option allows one bank of 16 inputs on a Centron node to be configured to read up to 16 BACnet inputs over the TCP/IP network. NOTE: All inputs in the bank of 16 will then ONLY work to read BACnet inputs.</p> <p>Requirements</p> <ul style="list-style-type: none"> • Presidio version 3 with build 1021 	<p>C.BACNET-PNL</p>
<p>This software option allows one Centron node to act as a BACnet server. All Centron inputs, including trouble alarms, are presented to other BACnet compatible systems over the network for read only. The following BACnet properties are available to be read by the other system: Object-name, Description , Analog Inputs, Trouble Alarm Inputs (Node power, DatabaseWatch, BuddyWatch, ComWatch and BatteryWatch) , Units , High-limit, Low limit and status flags (Alarm status, overridden, out of service).</p> <p>Requirements</p> <ul style="list-style-type: none"> • Presidio version 3 with build 1021 	<p>C.BACNET-SRVR</p>



Virtual Centron Dialers & VOIP Dialing Options

Type	Part #	Specification
<p>External USB Voice Dialer to connect to customer provided PC. This device is required to perform telephone alarm dial out for the Rees Scientific Virtual Node. Synthesized voice dial out capable of working with RSC customizable voice tags.</p> <p>*Note: Only 1 can be used per customer provided PC.</p>	C.V-DIALER	<p>Requirements</p> <ul style="list-style-type: none"> • USB 1.1 • Standard POTS telephone line
<p>The VOIP-Dialer enables you to perform alarm dial outs using existing telephone (POTS) line(s), when those lines cannot be directly attached to the Centron Presidio Node. Perfect for both virtualized environments (e.g. VMware) and situations where existing resources are all not present in the same location. Available in both single line and four line models.</p>	C.VOIP-DIALER-1 (1 Telephone line connection)	<ul style="list-style-type: none"> • Each module can communicate with a single host/computer • 1-4 telephone line connections <p>Requirements</p> <ul style="list-style-type: none"> • Standard POTS telephone line(s) • Windows: 11-7 • Windows Server: 2022-2008R2 • Single Ethernet connection • Static IP required • Power: 120VAC@ 3 Amps max
	C.VOIP-DIALER-4 (4 Telephone line connections)	
<p>The VOIP Software is used with all Centron Presidio nodes for alarm dial out and eliminates the need for both physical telephone lines and TAPI modem dialers.</p>	C.VOIP-SOFTWARE	<p>Requirements</p> <ul style="list-style-type: none"> • SIP VoIP service provider and credentials • RFC2833 compliant SIP VoIP service for DTMF (telephone key) input • Centron Presidio build 1018 or higher • Windows: 11-7 • Windows Server: 2022-2008R2 • Network connection

All specifications are subject to change without notice.

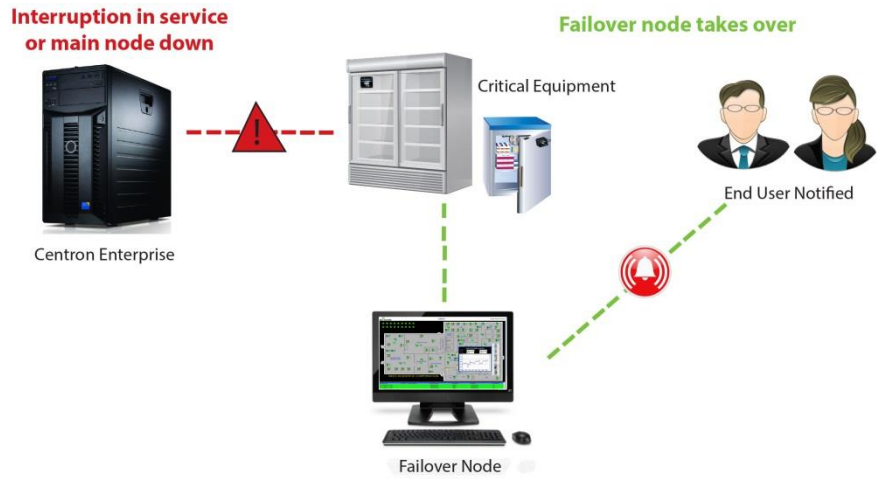


<p>The VOIP back up dialer provides back-up dialing function to Presidio nodes. If the primary telephone dial-out method malfunctions the VOIP BACK-UP DIALER will take over the alarm dial out duties.</p>	<p>C.VOIP-B-UPDLR</p>	<p>Requirements</p> <ul style="list-style-type: none"> • Centron Presidio build 1018 or higher • See Specifications for original dial up method
<p>External Cellular Dialer to connect to customer provided PC. This device performs telephone alarm dial-out for the Rees Scientific Virtual Node and requires 1 external USB port. Synthesized voice dial out capable of working with RSC customizable voice tags. One C-DIALER-CELL can be used per customer provided PC. Multiple C-DIALER-CELLs can also be connected to a C.VoIP-Dialer4, but each C-DIALER-CELL can only provide dial-out for a single Node. Comes with prepaid GSM SIM Card, but ongoing cellular service through a Cellular GSM telephone provider is required. Can be main dialer or back up. No Software build number restrictions.</p>	<p>CELL-DIALER</p>	<p>Requirements</p> <ul style="list-style-type: none"> • 1 external USB port. • Cellular network for the active SIM card needs to be compatible with the specified GSM band. • Ongoing cellular service through a Cellular GSM telephone provider.

Automatic Failover Node Protection

You now have the ability to protect your entire Centron Monitoring System against hardware failure through the Automatic Failover Node. The Automatic Failover Node continuously monitors your main node and will take over if a problem occurs. This protects against failure of hard drives, power supplies, phone lines, dialers, network connection failure, etc.

In addition, it can protect against failure of inter-site communications. If a remote site or sites fall out of contact with the main site, the Automatic Failover Node(s) at the remote site(s) will take over and provide full data logging and alarm handling functions.



Specification and Requirements

- Up to 4 backup nodes can run in a single machine.
- Multiple backup nodes can be specified for each Main Node to allow for multiple sites.
- Each Backup Node should have a phone line for alarm dial-out.
- Centron Presidio
- All node inputs MUST be network connected.

Type	Part #
Automatic Failover Node Protection	C.CENFAILOVER



Buffering Remote Panels

Type	Part #	Specification
<p>Connects any standard MPX remote panel to a Centron via TCP/ IP. This module can be field installed and connected to any existing Rees Scientific MPX remote panel. Provides 7 day buffer at 15 minute intervals. Provides remote panel battery charge monitoring. (NOTE: Requires Software build 1015 or higher.)</p>	Z3-MPX-NET	<ul style="list-style-type: none"> • Connects to existing LAN/WAN • Completely wired • Eliminates the need for long home run wiring pulls • Ability to place the Z3-NET on any IP connected network • Buffers up to 7 days' worth of data at 15 minutes intervals in case of network outages • Battery backup time of approximately 4 hours*
<p>Connects any standard MPX remote panel to a Z3 wireless system via its Z3 Direct Sequence Spread Spectrum radio. This module can be field installed and connected to any existing Rees Scientific MPX remote panel of any version. Provides 7 day buffer at 15 minute intervals. (NOTE: Requires Software Build 1015 or higher.)</p>	Z3-MPX	<ul style="list-style-type: none"> • Wireless Connection to Z3-NET • Wirelessly connects multiple remote panels to one Z3-NET • Eliminates the need for long home run wiring pulls • Ability to place the Z3-NET anywhere • Buffers up to 7 days' worth of data at 15 minute intervals in case of network outages • Battery backed up to collect readings for up to 24 hours*

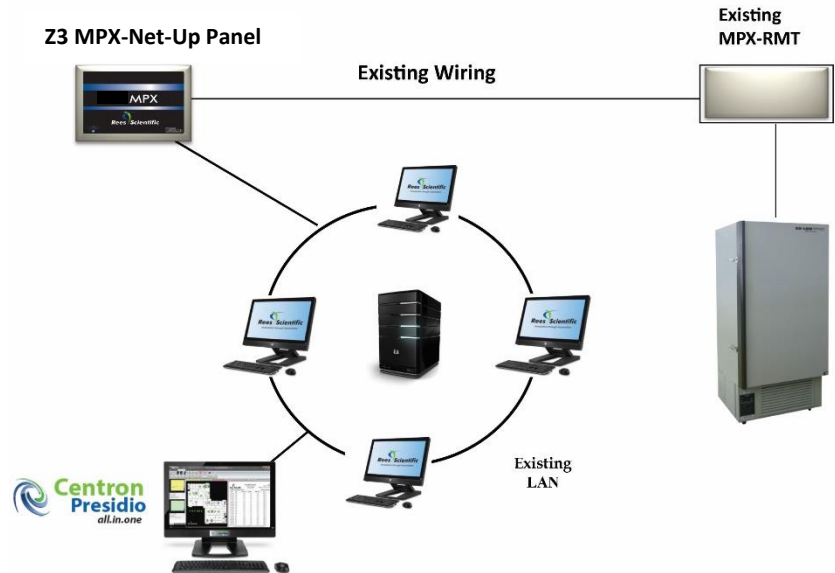
*Note: Please see WiFi, Wireless and Intermediate Devices section for more.

* Battery backup times will vary

All specifications are subject to change without notice.

Z3 MPX Net Up

The Z3-MPX-NET-UP provides data buffering and backup for up to 8 existing MPX panels. Once attached, the buffered panels communicate through a single network connection, allowing for easy communication to both virtualized and non-virtualized Centrons. Ideal for use with upgrading existing hardwired systems to the new Presidio and Enterprise systems.



Specifications

- Designed for in-wall installation with studs on 16" centers
- Able to accommodate up to 8 existing MPX panels. (Expansion boards sold separately Part#Z3-MPX-BOARD)
- Battery backed up to collect readings for up to 24 hours*
- Network Type: 10/100
- Dimensions 15"x12.75"x3.4"

Power:

120VAC @ 0.8 Amps max

Connection

- 1 Requires Ethernet Connection
- Connected to MPX panels via 3 conductors, 22AWG wiring

*Battery backup times will vary

(NOTE: Requires Presidio V3.0 Software.)

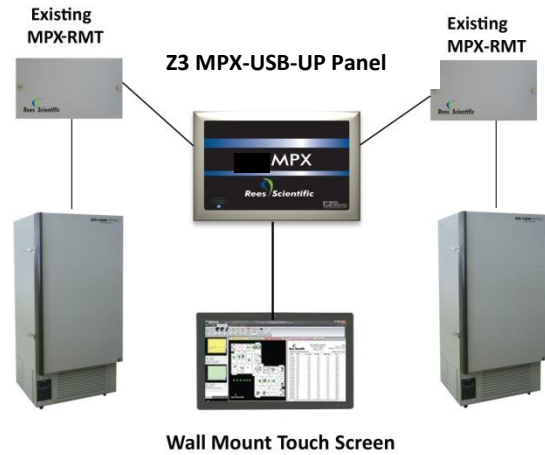
Type	Part #
Z3 MPX NET UP	Z3-MPX-NET-UP

All specifications are subject to change without notice.



Z3 MPX USB Up

Connects up to 8 existing MPX panels and converts them into a single USB connected device. Designed to accommodate the newest generation of Presidio Centron Hardware, the Z3-MPX-USB-UP is ideal for upgrading existing Wall-Mount Centrons. The Z3-MPX-USB-UP can work in conjunction or independent of the network.



Specifications

- Designed for in-wall installation with studs on 16" centers
- Able to accommodate up to 8 existing MPX panels. (Expansion boards sold separately Part#Z3-MPX-BOARD)
- Battery backed up to collect readings for up to 24 hours*
- Network Type: USB connection
- Dimensions 15"x12.75"x3.4"

Power

- 120VAC@ 3 Amps max

*Battery backup times will vary

(NOTE: Requires Presidio V3.0 Software.)

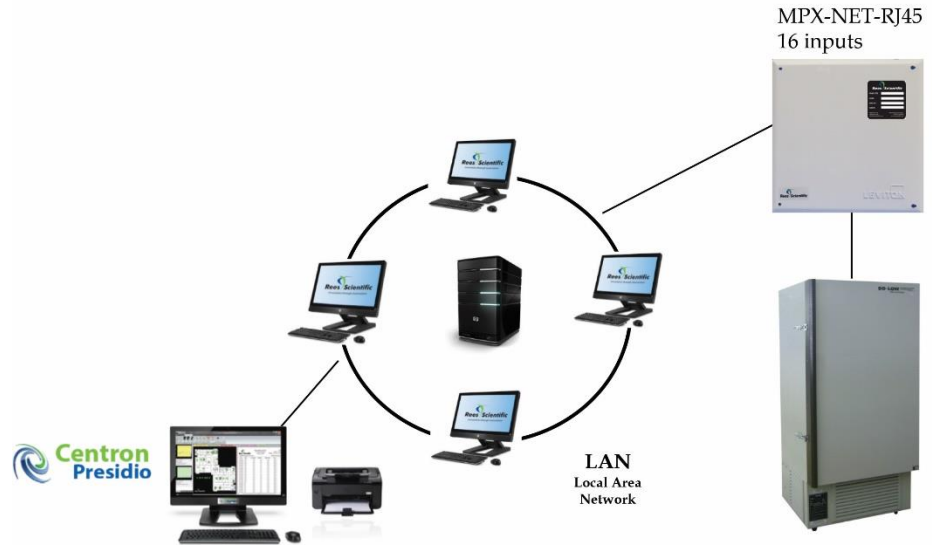
Type	Part #
Z3 MPX USB UP	Z3-MPX-USB-UP

All specifications are subject to change without notice.



Multiplex-Net Input Panel with RJ45

MPX Net panel is a network connected MPX remote panel that enables you to add up to 16 hard wired inputs. The MPX Net buffers up to 7 days' worth of data at 15 minute logging rate. Great for remote locations across town or across the globe.



Specifications

- Connects to existing LAN/WAN
- Completely wired
- Eliminates the need for long home run wiring pulls
- Buffers up to 7 days' worth of data at 15 minutes intervals in case of network outages
- Battery backup time of approximately 4 hours *
- Use standard CAT-5, CAT-6, CAT-6e cabling between the MPX panel and sensors
- Inputs are surge and RFI protected
- Available with 24 volt power for powered sensors (MPX-NET-RJ-24)
- Can handle a total of 1000 mA sensor load when using HUM-BAT-BACK

Power

2 120VAC outlets required
 * 2 240VAC outlets required

Connections

1 RJ45 Ethernet Port

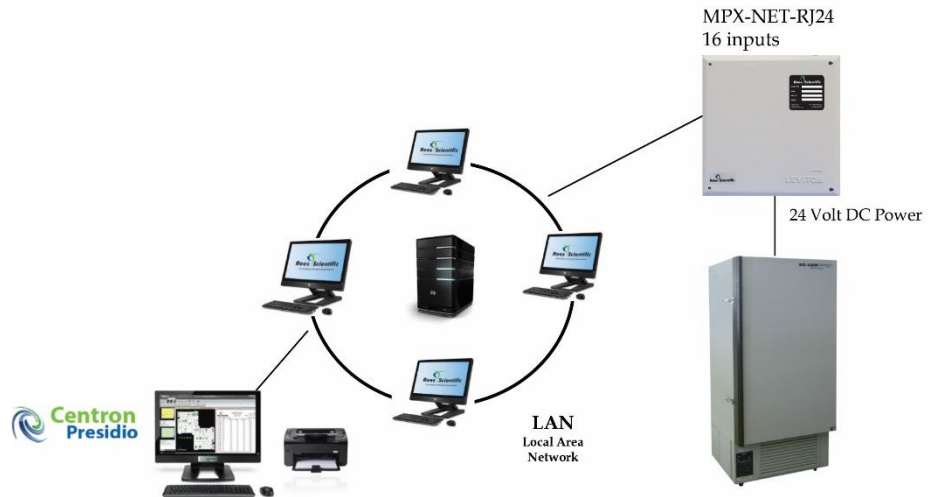
Type	Part #
Multiplex-Net Input Panel with RJ45	MPX-NET-RJ45
Multiplex-Net Input Panel with RJ45 International	MPX-NET-RJ45EV

* Battery backup times will vary
 (NOTE: Requires Presidio Software.)

All specifications are subject to change without notice.

Multiplex-Net Input Panel with RJ24

The MPX-Net-RJ24 is a network connected MPX remote panel that enables you to add up to 16 hard wired inputs. The MPX Net buffers up to 7 days' worth of data at a 15 minute logging rate. It is required when it's necessary to provide battery backed up 24-volt DC power to sensors or other devices that require more voltage, such as humidity, air velocity and differential pressure. Great for remote locations across town or across the globe.



Specifications

- Connects to existing LAN/WAN
- Completely wired
- Eliminates the need for long home run wiring pulls
- Use standard CAT-5, CAT-6, CAT-6e cabling between the MPX panel and sensors.
- Inputs are surge and RFI protected
- Dimensions: 14"L x 14"W x 4"D

Power

2 120VAC outlets required
 * 2 240VAC outlets required

Connections

1 RJ24 Ethernet Port

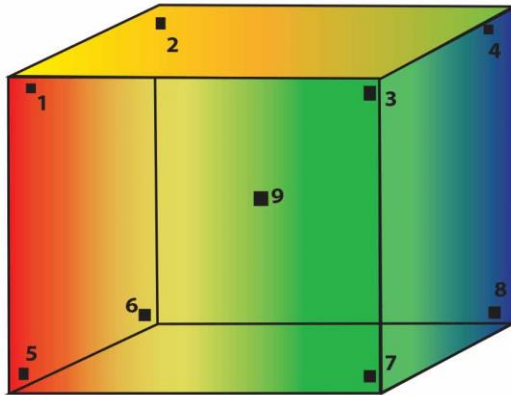
Type	Part #
Multiplex-Net Input Panel with RJ24	MPX-NET-RJ24
Multiplex-Net Input Panel with RJ24 International	MPX-NET-RJ24EV

(NOTE: Requires Presidio Software.)

All specifications are subject to change without notice.

Instant Chamber Mapping

Understand and validate your equipment environment with a completely automated mapping kit. Kit provides 9, 15 or more temperature sensors attached to Z3 modules that connect directly to any Rees Cloud, PC, or Existing System. Kits are available with standard thermistors, certified thermistors, or certified RTD sensors. Robust and instant reporting provides complete analysis of chambers with a click of a button.



<u>Index</u>	<u>ProbeID</u>	<u>INPUTNAME</u>
1	MAP1	LeftFrontTop-40F536B1:2
2	MAP2	LeftRearTop-40F536B1:1
3	MAP3	RightFrontTop-40F536BA:1
4	MAP4	RightRearTop-40F536BA:2
5	MAP5	LeftFrontBotm-41520FC8:2
6	MAP6	LeftRearBotm-40D9B5C4:1
7	MAP7	RightFrontBotm-40D9B5C4:2
8	MAP8	RightRearBotm-40EB5702:1
9	MAP9	CenterMiddle-40EB5702:2

Specifications

- Connects via Rees software (build number 1020 or higher) ReesCloud, or as a Rees Scientific service package
- First page of report describes
 - equipment being mapped
 - the manufacturer
 - model number
 - date
 - name of the operator
 - procedure followed
 - number of sensors used
 - target temperature
 - maximum temperature deviation permitted
 - duration of the analysis
 - number of measurements taken
 - a free form comment
 - statement of the pass/fail outcome
- A second page report will show
 - placement of the sensors in the chamber
 - sensor identifications
 - calibration certificate numbers
 - date of expirations
 - uncertainties of the sensors

All specifications are subject to change without notice.



Instant Chamber Mapping (Con't)

- The module provides
 - Graph of all inputs on one graph with Set Point and Acceptance Limit lines
 - Graph of each input individually along with Set Point and Acceptance Limit lines Statistics for each point including High, Low, Deviation from Set Point, and 95% Confidence Intervals
 - Graph of All Inputs showing Average Reading and 95% Confidence intervals
 - Graph of All Inputs showing between-input spatial variation Average Deviation from Chamber Average and 95% Confidence interval limits Summary
 - Graph showing Min, Max, Average, Set Point and Acceptance Limits for all inputs and Complete Summary of Chamber Performance showing Min, Max, Average, Deviations from Set Point, and Confidence Limits
- All of the calculations for these values will be automatically calculated by the software module using the data collected by the system along with parameters entered by the operator.

Type	Part #
Chamber Mapping Software	C.MAPPER-SOFT
9 Points Kit	C.MAP-KIT-9
15 Points Kit	C.MAP-KIT-15
Options:	
25 ft. RTD probe length	C.MAP-KIT-L25
50 ft. RTD probe length	C.MAP-KIT-L50
100 ft. RTD probe length	C.MAP-KIT-L100
Carrying and storage case	C.MAP-CASE