

Table of Contents**Centron Environmental Monitoring System**

Centron Presidio All-in-One.....	1-2
Enterprise Centron.....	1-3
Centron Presidio Software.....	1-4
Software Options.....	1-5
Virtual Centron Dialers.....	1-6
Automatic Failover Node Protection.....	1-7
Buffering Remote Panels.....	1-8
V2 MPX Net Up.....	1-9
V2 MPX USB Up.....	1-10
Multiplex Net Input Panel w/RJ45.....	1-11
Multiplex Net Input Panel w/RJ24.....	1-12

Centron Presidio All-in-One

Application:

The Centron Presidio All-in-one system is a complete solution for all of your monitoring needs. Each Presidio All-in-one unit monitors up to 128 inputs and can be combined and integrated for expansion. The system keeps readings and event data records to satisfy any regulatory authorities. The system provides high speed performance and complete reliability. It also offers a smaller footprint and comes equipped with Windows 7 operating system. The system can be stand alone or fully integrated with the customers' existing IT infrastructure. Moreover, it provides extremely reliable hardware, enhanced buffering, and increased security.



Specifications:

- Expandable up to 128 inputs.
- 32 bit architecture.
- Alarm notification via voice telephone, text messaging and e-mail.
- Infinite buffering of data collection on the Centron hard drive.
- LED Monitor.
- Smaller foot print.
- 22" monitor screen
- Works with hard wired and/or wireless sensors.
- Battery Backup.
- Software is available in English, French, German and Spanish.

Type	Order #
Centron Presidio All-in-one	C.CEN-ALL

Enterprise Centron

Application:

The Enterprise Centron environmental monitor offers a powerful and reliable centralized solution. With RAID Dual Level Data Redundancy, true multi-user simultaneous networking for up to 30 users, and access to the system via a web browser, the Enterprise Centron includes all of the features of the original Centron in a hardened server platform. Capable of housing up to 4 nodes, the system includes 1 node license that is authorized for up to 16 inputs with the ability to monitor up to 128 inputs. Bundled with 1 telephone dialer the Enterprise Centron can accept up to 4 individual dialers providing simultaneous alarm notification for system events.

The Enterprise Centron is designed for use with V1, V2 wireless components and MPX-NETBUFF wired remote panels. Existing MPX-RMT panels will require a V2-MPX or V2-MPX-NET upgrade.



Tower



Rack

Specifications:

- Expandable up to 512 inputs
- Server Operating System
- Standalone Tower or Rackmountable
- RAID-1 Data redundancy
- Database and Interface compatible with Presidio Centron Nodes/ No learning curve
- Software is available in English, French, German and Spanish.

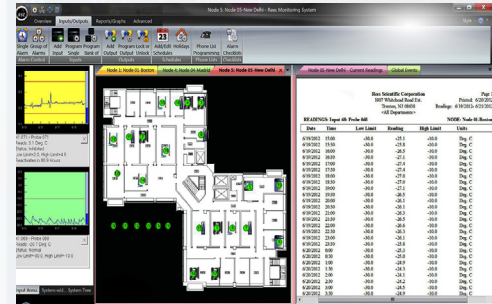
Dimensions: 17.94" H x 8.27" W x 24.01" D

Type	Order #
Enterprise Centron Environmental Monitor	C.CEN-ENT-3.0
The Rack Mounted Enterprise Centron	C.CEN-ENT-R3.0
License for additional 16 inputs on Centron Systems	C.I-LICENSE-16
Additional Node License	C-ENT-ADD-3.0
Optional monitor, keyboard, and mouse package	C.MON-PKG24
Enterprise Centron Software	C.CEN-ENT-S3.0

Centron Presidio Software

Application:

The Centron Presidio software monitors your critical equipment, continuously stores crucial data and alarms out through multiple channels. It's a secure, user friendly and intuitive software. Its layout is consistent with the latest version of Microsoft Windows as it offers a ribbon bar for better navigation and tabbed programming menus that are user friendly. All the different nodes in the system are color coded and contain tabs for ease of use. All information, from every node in your system, is permanently logged to the Readings or Events History Files and is encrypted to ensure data integrity. The reports offer automated push reporting where pdfs are generated automatically and are available for instant or scheduled emailing. The annunciator panel allows the user the ability to view multiple queries and graphs at the same time. The end user also has the ability to track each and every troubled input and can obtain instant real time readings. Whether a routine reading history or alarm history, every Centron Presidio report gives a detailed, easy to understand, accurate account that users find invaluable on many levels.



Specifications:

Recommended Requirements

- Operating System: Windows 7
- 1 USB port required per node

Type	Order #
Centron Presidio Software	C.PRESIDIO-3.0
Virtual Centron Presidio Server Software	C.VS-CEN-3.0

*Additional requirements may be necessary

Software Options

The Centron / Series II Monitoring System offers the following software upgrade options.

C.P-CAL-3	TCP/IP Open System Software - 3 user license. Allows up to 3 users to access system simultaneously.
C.P-CAL-10	TCP/IP Open System Software - 10 user license. Allows up to 10 users to access system simultaneously.
C.P-CAL-ADD10	TCP/IP Open System Software upgrade from 3 to 10 user license. Allows 4 to 10 users to access system simultaneously. Requires Initial Purchase of TCP-3.
VAL-KIT-CEN	Validation kit for Centron
C.WIN-MAP	Map/Floorplan to enhance Windows® Software
VOICE TAGS-1	Custom recorded alarm voice messages for Centron.
VOICE TAGS-2	20 additional custom recorded alarm voice messages (after initial purchase of VOICE TAGS-1) for Centron.

Virtual Centron Dialers & VOIP Dialing Options

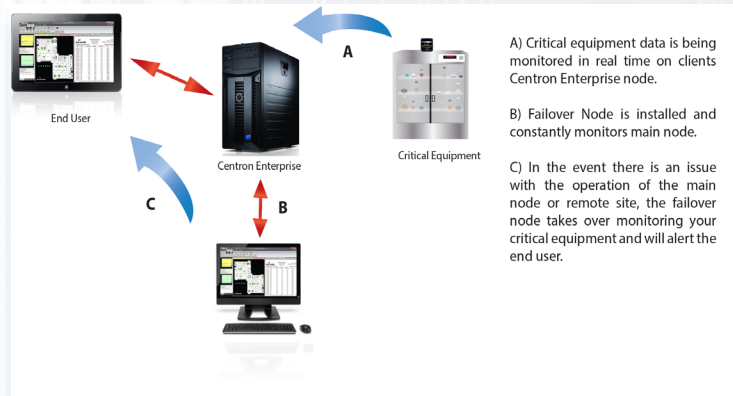
Order#	Application:	Specifications:
C.V-DIALER	<p>External USB Voice Dialer to connect to customer provided PC. This device is required to perform telephone alarm dialout for the Rees Scientific Virtual Node. Synthesized voice dial out capable of working with RSC customizable voice tags.</p> <p>*Note: Only 1 can be used per customer provided PC.</p>	<p>Requirements</p> <ul style="list-style-type: none"> • USB 1.1 • Standard POTS telephone line
<p>C.VOIP-DIALER-1 (1 Telephone line connection)</p>	<p>The VOIP-Dialer enables you to perform alarm dial outs using existing telephone (POTS) line(s), when those lines cannot be directly attached to the Centron Presidio Node. Perfect for both virtualized environments (e.g. VMware) and situations where existing resources are all not present in the same location. Available in both single line and four line models.</p>	<ul style="list-style-type: none"> • Each module can communicate with a single host/computer • 1-4 telephone line connections <p>Requirements</p> <ul style="list-style-type: none"> • Standard POTS telephone line(s) • OS: Windows 7 & Server 2008 R2 • Single Ethernet connection • Static IP required <p>Power:</p> <ul style="list-style-type: none"> • 120VAC@ 3 Amps max
<p>C.VOIP-DIALER-4 (4 Telephone line connection)</p>		
C.VOIP-SOFTWARE	<p>The VOIP Software is used with all Centron Presidio nodes for alarm dial out and eliminates the need for both physical telephone lines and TAPI modem dialers.</p>	<p>Requirements</p> <ul style="list-style-type: none"> • VOIP service provider and credentials • Centron Presidio build 1018 or higher • Windows 7/Server 2008 R2 • Network connection
C.VOIP-B-UP DLR	<p>The VOIP back up dialer provides back-up dialing function Presidio nodes. If the primary telephone dial-out method malfunctions the VOIP BACK-UP DIALER will take over the alarm dial out duties.</p>	<p>Requirements</p> <ul style="list-style-type: none"> • Centron Presidio build 1018 or higher • See Specifications for original dial up method

Automatic Failover Node Protection

Application:

You now have the ability to protect your entire Centron Monitoring System against hardware failure through the Automatic Failover Node. The Automatic Failover Node continuously monitors your main node and will take over if a problem occurs. This protects against failure of hard drives, power supplies, phone lines, dialers, network connection failure, etc.

In addition, it can protect against failure of inter-site communications. If a remote site or sites fall out of contact with the main site, the Automatic Failover Node(s) at the remote site(s) will take over and provide full data logging and alarm handling functions.



Requirements & Specifications:

- Windows 7/XP, Windows server 2008R2/2008/2003
- Up to 4 backup nodes can run in a single machine.
- Multiple backup nodes can be specified for each Main Node to allow for multiple sites.
- Each Backup Node should have a phone line for alarm dial-out.
- Centron Presidio
- All node inputs MUST be network connected.

Type	Order #
Automatic Failover Node Protection	.C-Failover

Buffering Remote Panels

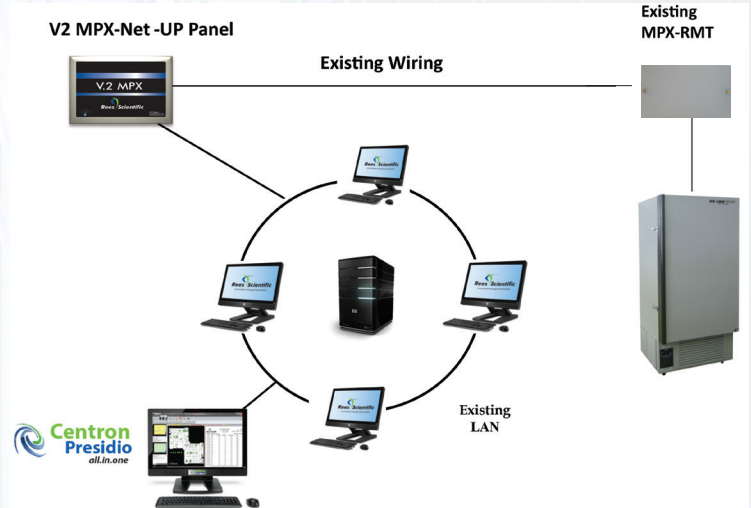
Order#	Application:	Specifications:
V2-MPX-NET	Connects any standard MPX remote panel to a Centron via TCP/IP. This module can be field installed and connected to any existing Rees Scientific MPX remote panel. Provides 7 day buffer at 15 minute intervals. Provides remote panel battery charge monitoring. (NOTE: Requires CentronSQL Build 1014 or higher.)	<ul style="list-style-type: none"> Connects to existing LAN/WAN Completely wired Eliminates the need for long home run wiring pulls Ability to place the V2-NET on any IP connected network Buffers up to 7 days worth of data at 15 minutes intervals in case of network outages Battery back up time of approximately 4 hours *
V2-MPX	Connects any standard MPX remote panel to a V2 wireless system via its V2 Direct Sequence Spread Spectrum radio. This module can be field installed and connected to any existing Rees Scientific MPX remote panel of any version. Provides 7 day buffer at 15 minute intervals. (NOTE: Requires CentronSQL Build 1014 or higher.)	<ul style="list-style-type: none"> Wireless Connection to V2-NET Wirelessly connects multiple remote panels to one V2-NET Eliminates the need for long home run wiring pulls Ability to place the V2-NET anywhere Buffers up to 7 days worth of data at 15 minute intervals in case of network outages Battery backed up to collect readings for up to 24 hours*

* Battery backup times will vary

V2 MPX NET UP

Application:

The V2-MPX-NET-UP provides data buffering and backup for up to 8 existing MPX panels. Once attached, the buffered panels communicate through a single network connection, allowing for easy communication to both virtualized and non-virtualized Centrons. Ideal for use with upgrading existing hardwired systems to the new Presidio and Enterprise systems.



Requirements & Specifications:

- Designed for in-wall installation with studs on 16" centers
- Able to accommodate up to 8 existing MPX panels. (Expansion boards sold separately Part#V2-MPX-BOARD)
- Battery backed up to collect readings for up to 24 hours*
- Network Type: 10/100
- Dimensions 15"x12.75"x3.4"

Power:
120VAC@ 3 Amps max

Connections

- 1 Requires Ethernet Connection
- Connected to MPX panels via 3 conductors, 22AWG wiring

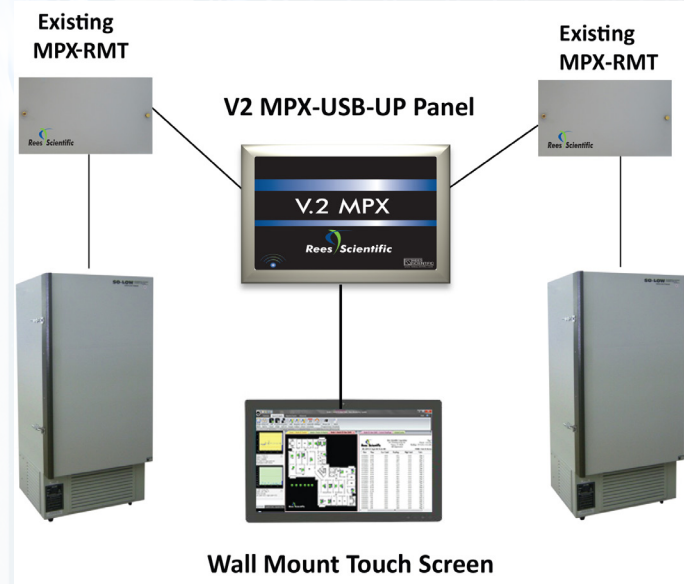
* Battery backup times will vary
(NOTE: Requires Presidio V3.0 Software.)

Type	Order #
V2 MPX NET UP	V2-MPX-NET-UP

V2 MPX USB UP

Application:

Connects up to 8 existing MPX panels and converts them into a single USB connected device. Designed to accommodate the newest generation of Presidio Centron Hardware, the V2-MPX-USB-UP is ideal for upgrading existing Wall-Mount Centrons. The V2-MPX-USB-UP can work in conjunction or independent of the network.



Requirements & Specifications:

- Designed for in-wall installation with studs on 16" centers
- Able to accommodate up to 8 existing MPX panels. (Expansion boards sold separately Part#V2-MPX-BOARD)
- Battery backed up to collect readings for up to 24 hours*
- Network Type: USB connection
- Dimensions 15"x12.75"x3.4"

Power:
120VAC@ 3 Amps max

* Battery backup times will vary

(NOTE: Requires Centron Presidio V3.0 Software.)

Type	Order #
V2 MPX USB UP	V2-MPX-USB-UP

Multiplex-Net Input Panel with RJ45

Application:

The MPX Net panel is a network connected MPX remote panel that enables you to add up to 16 hardwired inputs. The MPX Net buffers up to 7 days worth of data at a 15 minute logging rate. Great for remote locations across town or across the globe.



Specifications:

- Connects to existing LAN/WAN
- Completely wired
- Eliminates the need for long home run wiring pulls
- Buffers up to 7 days worth of data at 15 minutes intervals in case of network outages
- Battery back up time of approximately 4 hours *
- Use standard CAT-5, CAT-6, CAT-6e cabling between the MPX panel and sensors
- Inputs are surge and RFI protected
- Available with 24 volt power for powered sensors (MPX-NET-RJ-24)
- Can handle a total of 1000 mA sensor load when using HUM-BAT-BACK

Power

2 120VAC outlets required

Connections

1 RJ45 Ethernet Port

* Battery backup times will vary
(NOTE: Requires Presidio Software.)

Type	Order#
Multiplex-Net Input Panel with RJ 45	MPX-NET-RJ45

Multiplex-Net Input Panel with RJ24

Application:

The MPX-NET-RJ24 is a network connected MPX remote panel that enables you to add up to 16 hard-wired inputs. The MPX Net buffers up to 7 days worth of data at a 15 minute logging rate. It is required when it's necessary to provide battery backed up 24-volt DC power to sensors or other devices that require more voltage, such as humidity, air velocity and differential pressure. Great for remote locations across town or across the globe.



Specifications:

- Connects to existing LAN/WAN
- Completely wired
- Eliminates the need for long home run wiring pulls
- Use standard CAT-5, CAT-6, CAT-6e cabling between the MPX panel and sensors.
- Inputs are surge and RFI protected.

Power

2 120VAC outlets required

Connections

1 RJ24 Ethernet Port

Type	Order#
Multiplex-Net Input Panel with RJ 24	MPX-NET-RJ24

(NOTE: Requires Presidio Software.)